

# MIDDLE TENNESSEE



## GENEALOGY

VOLUME VIII, NO. 4 SPRING 1995

### MAY PROGRAM

Using Knoxville's McClung Historical Collection

Speaker: Steve Cotham

**May 20, 1995 - 1:00 P.M.**

Auditorium, Ben West Library  
Eighth Avenue, North & Union Street, Nashville

*published by*  
MIDDLE TENNESSEE GENEALOGICAL SOCIETY  
P. O. BOX 190625/NASHVILLE, TN 37219-0625

Middle  
 Tennessee  
 Counties  
  
 Bedford  
 Cannon  
 Cheatham  
 Clay  
 Coffee  
 Davidson  
 DeKalb  
 Dickson  
 Fentress  
 Franklin  
 Giles  
 Grundy  
 Hickman  
 Houston  
 Humphreys  
 Jackson  
 Lawrence  
 Lewis  
 Lincoln  
 Macon  
 Marshall  
 Maury  
 Montgomery  
 Moore  
 Overton  
 Perry  
 Pickett  
 Putnam  
 Robertson  
 Rutherford  
 Smith  
 Stewart  
 Sumner  
 Trousdale  
 VanBuren  
 Warren  
 Wayne  
 White  
 Williamson  
 Wilson

## General Guidelines for JOURNAL Submissions

Members of the Society are encouraged to submit unpublished primary source material of genealogical and historical importance. The data can be in the form of county records, cemetery accounts, Bible records, journals/diaries, "how-to" articles of broad interest, or historical facts so important for accurate research. Family histories that are well documented and pertain to the Middle Tennessee area will also be considered. Photographs, drawings, maps, and other illustrations can accompany the article and are encouraged. Complete and specific sources used in the submitted material should be clearly identified. In the case of Bible records, written permission from the owner of the Bible is necessary.

It is the submitter's responsibility to secure any written permission from any person or publishing company who own and/or assisted in the transcription of original records published. The Society or Editor cannot assume responsibility for the infringement of copyrights by contributors.

Please make sure handwriting is legible or the document is typed. Include your name, address, and phone number on the manuscript. If using a computer, saving the file in the ASCII [.TXT], or WordPerfect 5.1 format and enclosing the disk, along with a hard copy of the article, will be of great help. Do not format in PageMaker. The right to edit material for presentation, grammar and form, is reserved by the editorial staff. Material should be limited to a published length of approximately five pages.

JOURNAL ARTICLES are to be sent directly to the Editor at the address shown below. Include a postcard or SASE if you wish to be notified the manuscript has been received. All material submitted becomes the property of the Society.

QUERIES will be included in order of receipt as space permits. *Address:* Middle Tennessee Genealogical Society Queries, P. O. Box 190625, Nashville, TN 37219-0625. Be sure your name and complete address are shown on the query sheet.

BOOK REVIEWS: Books should be sent directly to Mrs. Shirley Wilson, Book Review Editor, 106 Leeward Point, Hendersonville, TN 37075. All materials become the property of the book review editor to be distributed as appropriate.

CHANGE OF ADDRESS: Please notify the Society at P. O. Box 190625, Nashville, TN 37219-0625.

**Editor:** Dorothy Williams Potter, 200 Sheffield Place, Nashville, TN 37215-3235

**Associate Editor:** Irene Griffey

**Editorial Staff:** Gale Bamman, Bobby Ezell, William D. Jackson, Jean Herndon, Dorothy Scott Johnson, Betsy Ragsdale, Barbara Sistler, Mary Sue Smith, George Watson, Shirley Wilson

### MTGS OFFICERS

President . . . . .	Byron Sistler
Vice President . . . . .	Mary Glenn Hearne
Recording Secretary . . . . .	Danya Downey
Corresponding Secretary . . . . .	Millie Abner
Treasurer . . . . .	Donna Powell
Directors . . . . .	Anne Bond
. . . . .	Mary Sue Smith
. . . . .	Nida Wheeler
. . . . .	Bobby Ezell
. . . . .	Dorothy Williams Potter, by appointment

# ***Middle Tennessee Genealogy***

**Volume 8, Number 4**

## **Table of Contents**

From Your Editor . . . . .	146
President's Page . . . . .	147
January MTGS Meeting . . . . .	148
On the March: The Family Historian and Military Records, by Livy I. Simpson . . . . .	149
Whitsett Petitions, 1874, abtracted by Mary Sue Smith . . . . .	154
Computer Interest Group Newsletter, by William D. Jackson . . . . .	156
Will of Clem McClaran, A Free Man of Color, submitted by Florence Langford . . .	158
Early County Records Now Available Free: New Interlibrary Loan Program of the Tennessee State Library & Archives, by Charles A. Sherrill . . . . .	159
Book Reviews, by Shirley Wilson . . . . .	165
Unpublished Bible Records of Middle Tennessee Families, contributed by Virginia Gooch Watson and Robert W. Anglea . . . . .	167
Spring Cleaning, 1879 . . . . .	172
Tennessee Supreme Court Records, contributed by Betsy Ragsdale and Gale Williams Bamman . . . . .	173
Solomon G. Morton Obituary, contributed by Thomas M. Green . . . . .	178
Prosperity Cemetery of Wilson County, Tennessee, by Thomas E. Partlow . . . . .	179
Queries . . . . .	189
Of Interest . . . . .	Back Cover

## FROM YOUR EDITOR

**I**t is indeed a pleasure to greet you from the pages of Middle Tennessee Genealogy. The publication is truly outstanding, and it is my earnest wish to continue in the excellent tradition that has been established. Our thanks go to Barbara Sistler, George Watson, and Irene Griffey, past Editors and their great staff.

The day has passed when one was able to pick up a publication such as the one you are holding and find pages upon pages of unpublished listings such as "Wills, 1800-1880," or "Marriages, 1823-1862." Most of these records are now available in other forms—in books or at least made available on microfilm through interlibrary loan. This situation forces us to look elsewhere for important unpublished material, be it genealogical or historical in nature, and we must dig more deeply to locate relevant data. Only through scholarly study will we gain a better understanding of the world that was known by our ancestors. In recognition of the scope of interest of our readers and the evolution of our Journal over the years, the Board of Directors has approved a name change. Beginning with the next issue, this publication will be called the *Middle Tennessee Journal of Genealogy and History*. The content will be the same—only the title will better describe the subject matter contained therein.

A few years ago, when the MTGS programs were changed from quarterly to bi-monthly, the program announcements on the cover of this publication were thrown out of phase. It was then necessary to mail cards to the membership announcing the two added meetings, causing extra expense of printing and postage. Therefore, your Editor has devised a way of eliminating this extra outlay by putting all programs under a new heading inside the Journal called "Mark Your Calendars."

With a new title and the program announcement being moved inside the publication, it became necessary to design a new cover. As approved by the MTGS Board of Directors, there will be a new look beginning with Volume IX. Be sure to watch for it.

Dot Johnson's abstractions of the Minutes of the Superior Court of North Carolina and Mero District have been suspended for the duration of her house remodeling. However, she has promised us a continuation at a later date.

Don't forget to renew your membership. We have an exciting year planned and want you to be a part of it.

*Dorothy Williams Potter*



## PRESIDENT'S PAGE

One of the wisest provisions our Society's Founding Fathers (mostly mothers) made when drawing up by-laws was to prohibit any officer or board member from serving in the same capacity for more than two consecutive years. This makes it possible for people who have difficulty saying no to escape the "in perpetuity" situation which would otherwise burden them.

It is with relief that I can report that this is my last "President's Page," and that by the time you see this I will have presided over my last board meeting. It has been an interesting two years, educational for me, and an experience which has given me some insights into my strong and weak points which I otherwise would not have had.

On another tack; the Society's mail is frequently filled with requests we are unable to meet. If you, the membership, had a better idea what we can and cannot do it will make it easier for all of us.

1. MTGS does not have a physical presence. Our "files" consist of back issues of the quarterlies, membership list, and a computerized surname cardfile. Thus we really don't have a place to store materials such as journals which may be shipped to the Society. There is no point in donating books to our library, which is non-existent.

2. Our organization does not have the facilities to perform research for people, even on a modest scale. We do have a list of professional researchers, a copy of which can be had for the asking (plus an SASE). This includes several certified genealogists of national standing in the field. Some research requests can be couched in the language of queries, which are free to our readers and are published in the quarterly as time and space permit.

3. We do have a fairly extensive surname cardfile, which can be perused at our bi-monthly meetings.

We have tried to make clear to members that the membership year starts June 1, not January 1. If you join or renew after June 30 there is a \$3 penalty, which is used to mail you back issues for the year, starting with the summer quarterly. It should be noted that June is approaching rapidly, so we should all get our renewal checks in soon.

We are fortunate again this year to have secured a nationally known genealogical lecturer for our November Seminar. Marilyn Miller Morton, MS, FIGRS, retired director of the British and Irish IGHR and of the Special Collections Department of Samford University's library, has agreed to visit with us on November 18. Lecture topics and location to follow.

*Byron Sistler*

### January MTGS Meeting



— photo submitted by Mary Glenn Hearne

*Left to right: Front row – Ellen Williams, Virginia Walton, Pauline Parks, Mary Wilson Burton; Second Row – Artalee Kimbro, Beatrice Freeman, Bill Stupak, Betsy Tacker Dawson, Oddie Bryant Jones; Third Row – Mary Glenn Hearne, Barbara Cantrell, Dayna Downey, Marsha Campbell, Susan Douglas Wilson, Lallie Wallace, and Carol Gipson.*

---

Pictured above are members who brought interesting items to our January “Show-’N-Tell” meeting. Ellen Williams received the prize of a year’s subscription to the **MTGS Journal** by bringing the item that won the “stump everyone” contest. Ellen’s exhibit was an eating implement used by her handicapped ancestor, Henry Franklin Williams.

Delicious refreshments were served by members, and many enjoyed the hospitality and conversation. This type of program has generated much interest, especially because it gives the members a better chance to get to know one another, and the Society plans to continue sponsoring this program.

## On the March The Family Historian and Military Records

by Livy I. Simpson

**W**ould your ancestor have sung "Marching Through Georgia" or "The Bonnie Blue Flag" while on the march during the Civil War? Information gleaned from military records can add to the portrait of your ancestor. The old man with a beard in the black and white photograph becomes the twenty-two year old Confederate soldier with red hair, a fair complexion, and blue eyes. Captured at Missionary Ridge, Tennessee, the young soldier was sent to prison at Rock Island, Illinois, where he was greeted by a biting temperature of 32 degrees below zero. Housed in Barracks 14 for over a year, he was released after taking the oath of allegiance in February 1865.

Military records can be a road to a wealth of information or a dead end. The purpose of this article is to introduce you to the common types of military records. These records exist at both the state and federal levels. In Tennessee, the state military records are in the office of the Adjutant General and many of these records are available at the Tennessee State Library and Archives. However, the primary focus of this article is on the federal records.

### Military Service Records

There are two types of military records: service records and records of benefits. Begin your research with the records of an individual's military service. As the name implies, these records document a soldier's service in the military.

Service records place an individual at a certain locality at a specific time. The types of information you can expect to find are: evidence of where an individual served, when he enlisted, and where and when he was discharged. Occasionally, there may be a date of birth, or age, or place of birth, or date of death, if the individual died in service. The information in these records increased over the years. You will probably find more facts on a Civil War soldier than a War of 1812 soldier.

A word of caution is in order about military service — do not confuse *militia* duty with *military* service. In the majority of cases the two are not the same. Militia duty, like jury duty, is a duty of citizenship. Militia units were originally organized for protection, but as time progressed the militia muster day was more a social event than a military one. A name on a militia roll does not equate with military service, even if the date coincides with the time of war. An individual serving in the militia was not generally entitled to the benefits awarded a volunteer soldier serving during wartime and service records do not exist for ordinary militia duty.

Of course, the military was at its largest during wartime and that is the most likely time to find an ancestor in military service. For organizational purposes, I have classified military service records as nineteenth century and twentieth century records, although those are rather arbitrary titles there is validity in this division.

## ***Nineteenth Century Service Records - Volunteers***

Military service during the nineteenth century wars could be in the volunteer army, the regular army, navy or marines, or a state military unit. These are important distinctions because the type of service affects how and where to search for service records. Each type of service has its own set of records. If you are searching for a soldier who served in the regular army during the Civil War do not check the compiled service records, these records are for volunteer soldiers.



*Confederate Veteran  
Lewis E. Simpson (1841-1929)  
photo taken circa 1916*

For volunteers who served in the military during wartime from the Revolution to the Philippines Insurrection, service records are arranged first by the war or conflict, then by state, and by military unit. These service records are known as compiled military service records. During the 1890s the War Department abstracted original records such as muster rolls, returns, and medical and prison registers and assembled a service record. These card abstracts were placed in an envelope, commonly referred to as the jacket or jacket envelope.

There are indexes to these compiled service records. Most wars have a consolidated index for all states and also indexes to individual states to help you find the appropriate military unit. A notable exception is found in the Civil War and the Union Army; the only index for these soldiers is by

state. Furthermore, not all service records have been microfilmed for Union volunteers, especially from larger states such as Massachusetts, New York, and Ohio.

The soldier's name on the jacket was arbitrarily chosen from one of the abstracts contained in his compiled military service record. It may not be his correct name and it may not be the way his name was most frequently spelled in the original records. If a soldier served in more than one unit, there may be more than one jacket envelope for him, and his other service may or may not be cross-referenced in the record or on the jacket. So look at the abstracts carefully and check out other records of similar names.

Researching the company history may offer clues about other records to check. For example, Company E, 12th Tennessee Infantry was transferred to the 3rd Kentucky Infantry. Any records for men in Company E after May 1862 are found in the records of the 3rd Kentucky. Furthermore, additional service by the same soldier performed in a state militia unit that was never mustered into federal service will not be documented in the records at the National Archives.

In addition to the compiled military service records, there are a series of card abstracts and personal papers that are not in jacket envelopes. These abstracts were



accumulated by the War Department, but were not filed for various reasons. The information on these abstracts was inadequate or contained discrepancies and could not be positively identified with any soldier for whom there was a compiled service record. Sometimes no compiled record had been established on the basis of other records, and the item did not provide enough evidence to warrant establishing one. These abstracts are arranged alphabetically or in the same general regimental order as the jacket envelopes. These records have been microfilmed.

### ***Nineteenth Century Military Service - Regular Army***

The Adjutant General's Office was responsible for the majority of official U. S. Army records for service of officers and enlisted personnel in the regular army. There are muster rolls from 1791 to October 1912 which list all troops actually present on parade or otherwise accounted for. Muster rolls are arranged by the branch of service, numerically by regiment, alphabetically by company or troop or other unit, and then chronologically. As you can see by this arrangement, to use muster rolls the researcher needs to know the military unit assignment of a serviceman and dates of his service.

The U. S. Army Register is a published list of regular army officers, beginning with the year 1813. You will find copies of the register in many libraries, although there is not always a complete set. West Point cadet application papers, 1805-1866, are available. These applications frequently contain a wealth of information on the applicant's family. A five volume set of officer's histories, 1861-1904, with information on an individual's military service was compiled by the Adjutant General's office.

For enlisted personnel there are enlistment papers, 1798-1912, which furnish name, date and place of enlistment, by whom enlisted, age, occupation, personal description, and regimental assignment. The registers of enlistments, 1798-1914, are arranged chronologically and alphabetically by the first letter of the surname. Entries for individual soldiers are then arranged chronologically by date of enlistment. Other records include certificates of disability, 1812-1899, and final statements, which are concerned with the death of a soldier on duty, 1862-1899.

### ***Twentieth Century Military Service***

For military service after the Philippines Insurrection in 1902, there are three types of records: personnel, discharge, and draft records. Most personnel records are located in the National Personnel Records Center in St. Louis, not the National Archives. Personnel records are the most difficult to obtain for two reasons. First, using these records for soldiers who served within the last ninety years is restricted to immediate family members. However, under the Freedom of Information Act the center will release some information about an individual. A fire in 1983 destroyed about 80% of the Army records for 1912-1959 and 60% of the Air Force personnel records for 1947-1963.

A more readily accessible record is a soldier's discharge. Each county in the United State was required to record the honorable discharge of soldiers and sailors who served in World War I and World War II. Discharges from other wars or time spent in service could also be recorded. Information on a discharge includes name,

race, birthplace, and age at time of enlistment. Determining the county where a soldier recorded his discharge is the most difficult task.

The third type of record is the draft registration. At this time, the only draft records available are World War I draft registration cards. Information supplied by each registrant included name, address, date of birth, age, race, citizenship status, birthplace, occupation and employer, dependent relative, marital status, father's birthplace, and name and address of nearest relative. These records are arranged by state, by local board, and by individual registrant; so, you will need to know where the individual was living at the time of his registration.

### **Benefit Records**

Benefit records are generally considered to be the most beneficial to family historians. Most guides on military records recommend obtaining benefit records before getting service records. But a word of caution is in order, if you do not do your homework about an ancestor's military service you may get the wrong records. Whenever possible, check the service record to lessen the chance of getting the wrong benefit records. The wait for records from the National Archives is a long one.

One generally equates benefits with pensions, but other benefits were available. These include bounty land warrants, soldiers' homes, burial records, and headstone applications. Some of these miscellaneous benefits for military personnel may yield important clues. In the early wars when land was still plentiful many veterans were awarded bounty land warrant for their service. To be eligible for a land warrant the applicant must have served in the army during a war between 1775 and March 3, 1855.

Applications for headstones, 1879-1964, relate only to servicemen who were buried in private cemeteries and whose heirs applied for a government furnished headstone. There are burial registers for soldiers buried in national cemeteries and post cemeteries. Many of the burial records are concerned with casualties during the Civil War and soldiers on active duty at the time of their death.

In 1851 the U. S. Military Asylum, later known as the U. S. Soldiers' and Airmen's Home, was created for soldiers in the regular army. In 1866 Congress established the National Home for Disabled Volunteer Soldiers for volunteer soldiers. There were several branches of these homes for volunteer soldiers and later they were taken over by the Veteran's Administrations. The type of records available varies for each individual home. The majority of these records are available only at the National Archives.

Pensions were not readily available for most veterans. Pensions became more generous over the years, were awarded earlier, and as a result the records are best for Civil War veterans. There are three types of pensions: disability or invalid, service pensions, and widows pensions. Federal pension records are divided into the following major series: Revolutionary War, Old Wars, War of 1812, Indian Wars, Mexican War, and Civil War and later. These pensions are arranged alphabetically, except the Civil War and later series.

Civil War pensions on the federal level were only awarded to Union soldiers. Civil War pension records are not microfilmed and you must request these pensions from the National Archives using NATF Form 80, which is also used to request service records and bounty land warrant records. Most southern states granted pensions to former Confederate soldiers living in their state, regardless whether they served in a Confederate unit from their state. These Confederate pensions are state records. There are published indexes for Confederate pension applications for many states.

On occasion, information contained in a pension application is available at the local level in the county court minutes. Applicants would go to court to legitimize their affidavits and depositions for their pension application. This is especially true for Revolutionary War pension applications.

### **Military Records for Civilians**

Wars also affected the civilian population and there are military records concerning this impact. For the American Revolution, there are records of Continental loan offices and Loyalists. During the War of 1812, the Alien and Sedition Acts caused records to be kept on recent British immigrants. There are U. S. Marshal's Returns 1812-1815, register of alien enemies, and register of persons removed from the Atlantic Coast.

The Civil War had an enormous impact on the civilian population. Information on civilians in the north can be found in tax assessment lists and draft records. There are three sets of draft records based on the age and marital status of the draftee (20-35 subject to military duty, 35-45 unmarried men subject to military duty, 35-45 married men). Each is arranged by state and by congressional district. For those with immigrant ancestors there are records of aliens drafted into U. S. army and released 1862-1864. Southern civilians are found in the union provost marshal's files, amnesty and pardon records, and southern claims commission.

Modern wars continued to affect the civilian population. There are records on the voluntary and forced evacuation of about 110,000 persons of Japanese ancestry during World War II.

### **For More Information**

This is only a cursory look at the military records available. If you are interested in a particular war, there are books on the available records pertaining to that war. The best books for the federal records are *Guide to Genealogical Research in the National Archives* (National Archives and Records Service, 1982) and *Military Service Records: A Select Catalog of National Archives Microfilm Publications* (National Archives Trust Fund Board, 1985). The National Archives also has a pamphlet, *Military Service Records in the National Archives of the United States* (General Information Leaflet # 7, revised 1985), which provides a good overview of the more common records.

# WHITSETT PETITIONS, 1874.

Davidson County, Tennessee, Court Minute Book N

Abstracted by Mary Sue Smith from microfilm

[pp.178-180]

5 Feb. 1874

HENRY S. WHITSETT *et als.*

vs

WILLIAM A. WHITSETT *et als.*

Petition of HENRY S. WHITSETT, WASHINGTON THOMAS & wife PRISCILLA M. THOMAS, D. F. THOMPSON, JO BIGLEY, WILLIAM ALEXANDER and wife MARY ALEXANDER, URSULA JORDAN, citizens of Davidson County and JAMES R. CAROTHERS, citizen of Williamson County & WM CAROTHERS, citizen of Lauderdale County, Tenn.

vs

WM. A. WHITSETT, MARTHA C. WHITSETT, EUGENIA & IDA BIGLEY, citizens of Davidson County, Tenn.

JAMES M. WHITSETT departed this life on \_\_ day of \_\_ 1840 in the County of Davidson leaving surviving him his widow MARTHA S. WHITSETT and his children WILLIAM A. WHITSETT, HENRY S. WHITSETT, PRISCILLA M. WHITSETT, MARGARET WHITSETT, URSULA WHITSETT, MARTHA WHITSETT AND JOS. WHITSETT. During the year 1842 proceedings were instituted in the Circuit Court of Davidson County to have his land partitioned between his widow and children . . . recorded in Minute Book 'N.' Since the above proceedings PRISCILLA M. WHITSETT has intermarried with WASHINGTON THOMAS; MARGARET WHITSETT has intermarried with B. F. THOMPSON; MARGARET THOMPSON has since departed this life leaving surviving her husband and two children, MARTHA E. & MARY THOMPSON. They have since married, MARTHA E. intermarrying with JO BIGLEY and on the \_\_ day of \_\_ 18 \_\_ she departed this life leaving surviving her husband and two children, defendants EUGENIA & IDA BIGLEY who are minors without any regular guardian. MARY THOMPSON intermarried with WILLIAM ALEXANDER. URSULA WHITSETT intermarried with ARET E. JORDAN; said ARET E. has since departed this life, leaving URSULA surviving him. MARTHA WHITSETT intermarried with WILLIAM CAROTHERS and said MARTHA & WILLIAM have departed this life leaving surviving them JAMES R. & WILLIAM CAROTHERS. JOSEPH WHITSETT & his wife have departed this life leaving surviving them MARTHA E. WHITSETT, their only child and a minor, and WM. A. WHITSETT is her guardian.

[pp.287-290]

6 April 1874

H. T. WHITSETT & OTHERS

vs

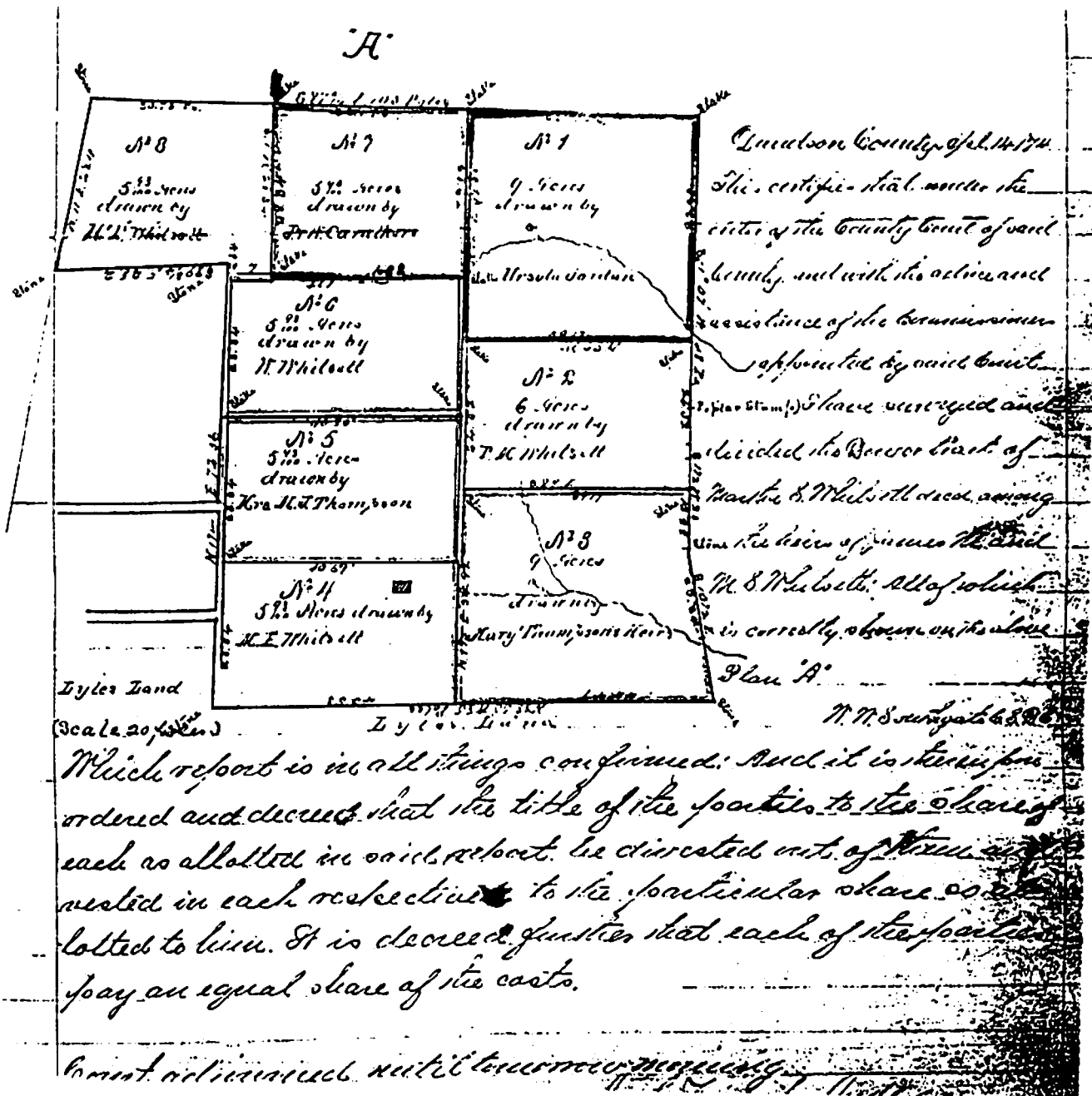
WM. A. WHITSETT & OTHERS

Original bill filed 5 Feb. 1874 in this Court; JAMES M. WHITSETT departed this life in 1840 in Davidson County, leaving surviving him as heirs at law to a tract of land located in Davidson County...one of the children known as MARY JANE, widow of \_\_\_\_ THOMPSON, was omitted from the original bill.

IDA & EUGENIA BEGLEY are minors and WM. A. WHITSETT is a proper person to act as Guardian.

JAMES M. WHITSETT departed this life on \_\_ day of \_\_ 1840 leaving surviving him his widow MARTHA S. WHITSETT and his children WILLIAM A. WHITSETT, URSULA WHITSETT, HENRY T. WHITSETT, PRISCILLA M. WHITSETT, MARTHA WHITSETT, MARGARET WHITSETT, JOSEPH WHITSETT AND MARY J. THOMPSON.

Jan. Term of the Circuit Court of Davidson County, 1842, land was partitioned between his widow and children . . . said widow MARTHA S. WHITSETT departed this life on \_\_ day of \_\_ 1873 and the children herein named who are living and the representatives or children of those who are dead are the only heirs at law of JAMES M. & MARTHA S. WHITSETT dscd. that each child is entitled to one share or one eighth part of said dower interest and that the children of those deceased are entitled to the share of their deceased parent. HENRY T. & WILLIAM A. WHITSETT sons of JAMES M. & MARTHA S. WHITSETT dscd, PRISCILLA M. WHITSETT, URSULA JORDAN & MARY J. THOMPSON, daughters of JAMES M. & MARTHA S. WHITSETT are each entitled to one share of said dower interest; MARTHA E. WHITSETT in right of her father, JOS. WHITSETT, dscd., who was a son of said JAMES M. & MARTHA S. WHITSETT is entitled to one share; JAMES R. & WILLIAM CAROTHERS in right of their mother, MARTHA CAROTHERS, dscd., daughter of said JAMES M. & MARTHA S. WHITSETT, are entitled to one share; MARY ALEXANDER, in right of her mother, MARGARET THOMPSON, dscd; IDA & EUGENIA BEGLEY, in right of their mother, MARTHA E. BEGLEY, dscd.



Plan "A"

Division of Whitsett Land

April 14, 1874

Davidson County, Tennessee, Court Minute Book N, p. 347

(see previous page for pertinent petitions)

## COMPUTER INTEREST GROUP NEWSLETTER No. 5 - Spring 1995

by William D. Jackson<sup>1</sup>

### Organize your files

Do you have a system for naming your files? Go to the file manager, take a look at the disk directory for your hard drive. Did you make a directory for genealogy files and other records you have created or have you dumped everything into the program directory? It is best not to place files you have created into the same directory where your software program files are located. This clutters up your disk and makes finding a file much more difficult as more files are added. Make a directory for yourself, use your first name, initials or a short label that is easy to remember. Then make sub-directories for correspondence, business, other categories unique to your interests. Make directories and sub-directories for your spouse or children. Then make a genealogy directory with sub-directories for correspondence, family history, other categories. Look at your file directory and rename files if necessary, then move or copy files to the desired directories. It is also very important to have your files properly identified with names that are consistent. This will reduce the chances of accidentally erasing a file or creating unnecessary backups. Before moving any files, check for duplicate file names. Older, unused files could be saved on a floppy disk for archival purposes which would free up disk space. Other files might have to be renamed to avoid having two files with the same name. Consider using file names with initials or abbreviations and numbers. Words longer than 8 characters can be shortened by omitting vowels. Sometimes a combination of initials or abbreviations with selected symbols and characters can be used but don't use any restricted symbols or characters. For example: WDJ-1, wmjcksn, jcksn-1, nwsltr-1, family-1, fam-a-1, fam-hist, or fam-wdj can be used but WDJ\*1 would not be acceptable.

### Backups and Upgrades

Many computers now come with DOS and Windows pre-installed but the installation disks are not always provided. The computer manufacturers advise you to make backup disks. What about other software? Did you make a backup copy of the installation disks for your genealogy software? Do you routinely make backup disks for your genealogy data

files? When you exit or close most genealogy programs, program files are updated with any changes made. Sometimes you will get a prompt asking you whether to save the changes. You might think this is enough and see no reason to make a backup file and transfer it to a floppy for safekeeping. But what will you do if something happens to your hard drive or you get a new computer? The best way to protect yourself against such a disaster is routine backup of your program files and having backup copies of program disks. Making a backup disk is not difficult, but if you decide to backup everything on your hard disk, then it can be a daunting task. Remember to get enough blank formatted disks before you start. Once you have made all your backup files, label them and include the date of the backup. Then find a safe, convenient location, away from your computer work station, to store backup disks, sales slips, warranties, and other documents. The time spent now may very well save you hours of anguish and wasted effort later.

Perhaps you have decided to upgrade your genealogy software now that you have a new computer? Maybe you are using Windows but have continued using PAF or another DOS based genealogy program. You have spent weeks or months, maybe years updating family records into your computer. Don't panic at the prospect of starting over. PAF and other genealogical programs include a GEDCOM utility that enables you to transfer files from one program to another. Before transferring files from one genealogy program to another, either on the same computer or a different one, be sure you have made copies of those files on your hard drive or better yet, on floppies.

The GEDCOM utility also allows you to exchange data with other researchers or family members. You could prepare a GEDCOM file for "export" with your program and send it to someone. They could do the same thing. You would then "import" their GEDCOM file into your data base. Most genealogy programs claim to have this capability but it does not ensure everything in one program will transfer to another program in exactly the same format. In fact, you could lose some valuable information or experience numerous errors. One program might have space for notes or other information about an individual or

---

<sup>1</sup>Address news, comments, questions, etc. to Computer Editor/MTGSI/PO Box 190625/Nashville, TN 37219-0625



family group while another program might not provide space for notes. One program could have categories for data that don't exist in another or the space for the data is very limited. So be aware of these differences between programs and between different versions, ie, PAF to ROOTSIV, or Family Tree Maker, and ROOTSIII to ROOTSIV.

### **Images: Past, Present and Future!**

Genealogy programs do an excellent job of printing a family tree or group sheet but you need a word processor when writing a family history or an article for a newsletter or other publication. It is possible with some genealogy programs to prepare a report and save it as a text file or ASCII file. Then you can open that file with your word processor, edit, format and print it. After the file is edited in your word processor, save the file as an unformatted text or ASCII file. You could save the file to a floppy disk or copy the file from your hard drive to a floppy disk. The floppy disk could be sent to someone else or to the editor of a journal or other publication. They can then open the file with their word processor, edit if necessary, format and print the copy you sent them. But what about photographs, maps, drawings and other graphic materials?

Most of us have a collection of old photographs. Some may be in frames or a photo album. More likely they are in shoe boxes, in a drawer or closet somewhere. Hopefully they haven't been stored in the garage or basement. Most genealogy programs do not allow you to insert photographs into your data files. Some would allow you to create a frame for a photograph that could be added later after the family tree was printed, but you had to have a photo of the right size. Have you ever tried to get an enlargement or copy made of a photograph? If so, then you know what a hassle it can be. Usually the negatives are missing and even if you can find the negatives, it is very difficult to match selected photos with the right negatives. According to Kodak estimates, 98% of all photographs taken are never copied or enlarged. But now a new digital imaging technology has been introduced by Kodak that will enable you to make your own copies or enlargements at a local camera store. The CopyPrint station was first marketed in Perth, Australia, in early 1994 and introduced in the U.S. in July. You can place a photograph in the machine, which resembles a small photocopier, push a button to select the size of print desired, and five minutes later the copy emerges. An 8x10 color print costs about \$10. The copy is comparable to a regular photographic print. One of these CopyPrint stations is likely to be in a nearby Wolfe Camera store now or

will be very soon.

This will make it easy for us to copy old photographs to preserve them. It will also enable us to send copies to other genealogists or publishers of newsletters and books without risking the original photograph. But what about other archived material such as deeds, wills, birth certificates, family Bible, newspaper articles, books, census records and other government records? Some genealogists also make tape recordings, both audio and video, for their collection. Until recently, it was not possible to include these "multimedia" materials in a genealogy program. The rapid growth of computers with CD-ROM and sound cards opened the door for "multimedia" in which audio visual materials can be stored as digital information on your computer hard drive, floppy disks or a photo CD. Now with Family Tree Maker for Windows, you can store photographs and archives materials along with sound and video in your genealogical files. A scanner, either hand held or flat bed, can be used to convert photographs and other printed materials into digital images and stored as graphics files on your computer. Kodak will convert photographs into digital format on a Photo CD. You could then view these photographs on your computer or print them to a file in your word processor or to Family Tree Maker. An alternative if you don't have a CD ROM Drive is available from Seattle Film-Works, Inc. They will convert your photographs into "Pictures on Disk". The digital image files are stored on a floppy disk which allows you to view selected pictures using the program that is included. The files can also be imported into Family Tree Maker or your word processor.

A good overview of how you might use Family Tree Maker for Windows to display family photographs and other records can be found in the NGS/CIG Digest of the November/December 1994 issue of the National Genealogical Society Newsletter. An article by Carla Ridenour "New Technologies: Enhancing Your Family History with Multimedia" explains how she used a digital camera to capture images of a newly born grandchild in Hawaii and then sent those images to grandparents in Oregon by uploading the files to a BBS on the mainland. She took tape recorders with her to get pictures and sound. On her return home, Carla used the scrapbook feature of FTM to insert baby pictures, sounds and video files along with other information about the newest addition to the family. Now Carla and her husband can click on an icon in the menu to see a photograph and listen to baby sounds or view a bath time video. She cautions however, that you will need lots of memory and at least a 386 SX computer if you want to expand your multimedia options.

## **Will of Clem McClaran<sup>1</sup>**

A Free Man of Color

Submitted by Florence Langford

---

Written 17 April 1849, Probated June 1849

IN THE NAME OF GOD AMAN I Clem McClaran (a free man of color) do make publish and ordain this as my last Will and Testament – hereby revoking and making void all other wills by me at any time made –

FIRST – I direct that as soon after my death as practicable my funeral expenses and debts be paid – Secondly, I give and bequeath to my son-in-Law John Smith, my Daughter Ester who is now in his possession with all that she has to him for ever – the money I have on Interest I wish it to remain on interest for three years after my death; then I lend one sixth part it to my wife Racheal during her natural life or widowhood, and I give to my son Clem at the end of three years after my death a thirty five dollar horse and Ten Dollar saddle – I wish my stock of hogs horses cows sheep and with my house and Kitchen furniture plantation tools and to remain with and in possession of my wife and the children than may live with her unless it may necessary to dispose of some – I with my cotton that is in Nashville be sold and the money put on interest and be called in disposed of as the other money is that is now on Interest at the death or marriage of my wife I wish all my property money and effects equally divided between all my children except my Daughter Ester Smith who I think I have given her a full portion witness my hand & seal this 17 day of April 1849.

Clem McClaran  
His X Mark and seal

Witness:  
Matthew Marale

---

### **Inventory of the Est. of Clem McClarin Dec'd.**

1	Note on Isac House this Amt	\$ 300.00	2	Tables 1 pr. Warping Bairs	
1	" on Willie Brown	50.00	2	Chests 2 tubs 1 churn 2 pots	
1	" on Wm. S. Webb	80.00	2	Ovens 2 Cotton Wheals 2 Pr. Cotton Cards	
1	" Felix G. McClairin Doubtful	6.25	5	Feather Beads & furniture	
1	" Robert Saunders	2.55	1	set of Shoe Tools & lasts	
3	Horse Beastes		4	Ploughs 1 pr. Gear 4 Hoes	
1	Two Horse Waggon & gear		1	Grubbing Hoe 1 Grind Stone	
44	Hogs		1	Iron Pot Rack	
9	Sheep		A quantity of Corn & Fodder		
13	Geece		A	" " Bacon	
5	Cows & calfs		3	Bails of Cotton Waits unknown	
3	Beadsteads 6 chairs 1 Safe		July 1, 1849 W. G. Webb, Adm.		

---

<sup>1</sup> Copy of Original Will located in the Williamson County Preservation of Records.

## **EARLY COUNTY RECORDS NOW AVAILABLE FREE**

### **New Interlibrary Loan Program of the Tennessee State Library & Archives**

Charles A. Sherrill  
Director, Public Services

Most genealogists interested in Tennessee research know that the State Library & Archives (TSLA) is the best place to find important records from each of the counties in the state. More than 8,000 people write to TSLA each year asking for information gleaned from various records. Thousands more visit the institution to conduct their own research.

Since the 1950s, microfilm camera crews from the Library & Archives have been visiting Tennessee courthouses to copy bound volumes of "permanent value." This microfilming program is one of the most complete of any state in the nation, and has brought a vast collection of valuable genealogical data into the state archives in Nashville.

Now genealogists have access to some of these local government records on interlibrary loan, thanks to a new program developed by TSLA. Up to five reels of microfilm may be borrowed through local public or academic libraries, and received free through the mail from the Library & Archives.

Only selected records are available for interlibrary loan. TSLA has made a duplicate set of these reels for mailing, and those records thought to be of the greatest interest were selected for the project. The reels contain:

- **Marriage records before 1860**
  - **Wills and estates before 1860**
    - **Guardianships before 1860**
      - **Deed indexes before 1860**

Of course, some reels contain records after 1860. TSLA's goal was to make a lending copy of every reel that contained these important records up to 1860, but in doing so the later records which often appear on the same reels were also copied. A list of the reels available for lending follows.

Persons interested in borrowing these materials should contact the interlibrary loan librarian at their local library. Their librarian will submit a loan request to the TSLA. Orders should be filled within three weeks, but be forewarned that some borrowers will experience delays. TSLA only has one reel to lend in each case. If that reel is out on loan, TSLA will maintain a waiting list and send it out again as soon as it is returned. The loan period is thirty days. Some local libraries may charge the borrower for return postage, but otherwise the program is free.

The TSLA also sells copies of microfilmed records. If you are interested in browsing through old court minutes or deed books, for example, you can purchase a reel for \$15 plus \$1 postage. Those interested in purchasing microfilm should write or call the Library & Archives for details.

## PRE-1860 COUNTY RECORDS ON MICROFILM

The following reels of microfilm can be borrowed on interlibrary loan from the Tennessee State Library & Archives. The loan period is two weeks, and borrowers are limited to five reels of film. Loans are made to a public or academic libraries for use on their premises only. There are no loan fees, but the borrower may be responsible for return postage. Please refer to the *county name* and *roll number* when making a loan request. Many more county records are available on microfilm at the Archives, and copies of rolls may be purchased for \$15 each.

**ANDERSON**

- Roll #8 Marriages-1838-1912
- Roll #28 Wills-1890-1889
- Roll #24 Settlements-1859-1893
- Roll #22 Inventories of Estates-1847-1859
- Roll #28 Index to deeds-1802-1906

**BEDFORD**

- Roll #106 Deed Index-1808-1875

**BENTON**

- Roll #38 Marriage Records-1838-1873
- Roll #64 Wills-1855-1968
- Roll #37 Insolvent Estates-1852-1943
- Roll #65 Deed Index-1836-1950

**BLED SOE**

- Roll #32 Deed Index-1797-1942

**BLOUNT**

- Roll #80 Marriages-1795-1898
- Roll #139 Wills-1795-1934
- Roll #73 Inventories and Estate Settlements-1857-1874
- Roll #148 General Deed Index-1794-1891

**BRADLEY**

- Roll #22 Wills-1859-1905

**CAMPBELL**

- Roll #10 Marriage records-1838-1889
- Roll #28 Estate Book-1806-1841 (not individually indexed)
- Roll #27 Deed Index-1804-1912

**CANNON**

- Roll #19 Marriages-1838-1898
- Roll #27 Wills-1836-1928
- Roll #16 Inventories of Estates-1848-1859
- Roll #40 Deed Index-1836-1916

**CARROLL**

- Roll #47 Marriages-1838-1873
- Roll #112 Wills-1822-1904
- Roll #101 Settlements Administrators-1847-1854
- Roll #102 Settlements Administrators-1855-1860; 1869-1880
- Roll #44 Inventories of Estates-1852-1899
- Roll #311 Insolvent Estates-1854-1871
- Roll #312 Insolvent Estates-1853-1907

**CARTER**

- Roll #59 Marriages-1790-1829
- Roll #60 Marriages-1830-1850
- Roll #61 Marriages-1796-1887
- Roll #101 Wills-1794-1876
- Roll #58 Inventories of Estates-1839-1918
- Roll #104 Deed Index-1795-1911

**CHEATHAM**

- Roll #24 Marriages-1856-1938
- Roll #43 Wills, Inventories, and Estate Settlements-1856-1908
- Roll #22 Insolvent Estates, Accounts of-1859-1951
- Roll #47 Deed Index-1856-1921

**CLAIBORNE**

- Roll #6 Marriages-1838-1868
- Roll #1 Inventories & Settlements of Estates and Wills-1839-1892
- Roll #5 Inventories & Settlements of Estates and Wills-1839-1892
- Roll #1\* Inventories-1848-1865
- Roll #17 Deed Index-1801-1910

**COFFEE**

- Roll #46 Marriages-1853-1897
- Roll #74 Wills-1836-1901
- Roll #77 Deed Index-1836-1910

**CUMBERLAND**

- Roll #45 Deed Index-1854-1939

**DAVIDSON**

- Roll #489 Marriage-1789-1837
- Roll #470 Marriage-1837-1863
- Roll #427 Will Books-1784-1816
- Roll #428 Will Books-1816-1821
- Roll #429 Will Books-1821-1832
- Roll #430 Will Books-1832-1840
- Roll #431 Will Books-1840-1846
- Roll #432 Will Books-1846-1853
- Roll #433 Will Books-1853-1859
- Roll #434 Will Books-1859-1865
- Roll #A Deed Index-1784-1871 (A-K) Reverse
- Roll #B Deed Index-1784-1871 (L-Z) Reverse
- Roll #H Deed Index-1784-1871 (A-K) Direct
- Roll #I Deed Index-1784-1871 (L-Z) Direct

**DECATUR**

- Roll #16 Deed Index-1846-1926

**DEKALB**

- Roll #49 Marriages-1848-1887
- Roll #77 Will Books-1838-1968
- Roll #39 Administrators' Settlement Books-1846-1907
- Roll #47 Minutes of Insolvent Estates-1856-1946
- Roll #78 Deed Index-1838-1925

**DICKSON**

- Roll #35 Marriage records-1817-1836
- Roll #36 Marriage records-1837-1839
- Roll #37 Marriage records-1838-1899
- Roll #52 Will Books-1803-1860
- Roll #22 Administrator's Settlements-1823-1860

Roll #54 Deed Index Books--  
1804-1912

### **DYER**

Roll #104 Wills-1853-1937  
Roll #108 Deed Index-1822-1878

### **FAYETTE**

Roll #13 Marriage Records--  
1838-1871  
Roll #34 Wills-1836-1905  
Roll #33 Estate Settlements--  
1858-1860  
Roll #33 Inventories-1854-1856

### **FENTRESS**

Roll #6 Deed Index-1820-1904

### **FRANKLIN**

Roll #60 Marriage Records--  
1838-1883  
Roll #97 Will Books-1808-1847  
Roll #47 Administrators', Execu-  
tors', & Guardians'  
Settlements-1835-1854  
Roll #48 Administrators', Execu-  
tors', & Guardians'  
Settlements-1857-1865  
Roll #100 Deed Index--  
1807-1899 (A-Z) Reverse  
Roll #101 Deed Index--  
1899-1936 (A-Z) Reverse

### **GIBSON**

Roll #126 Marriage Bonds--  
1824-1833;  
1834-1843 (A-B)  
Roll #127 Marriage Bonds--  
1834-1843 (B-H)  
Roll #128 Marriage Bonds--  
1834-1843 (I-W)  
Roll #129 Marriage Bonds--  
1834-1843 (W-Z);  
1844-1853 (A-F)  
Roll #130 Marriage Bonds--  
1844-1853 (F-P)  
Roll #131 Marriage Bonds--  
1844-1853 (P-Z);  
1854-1863 (A)  
Roll #132 Marriage Bonds--  
1854-1863 (A-F)  
Roll #133 Marriage Bonds--  
1854-1863 (F-M)  
Roll #134 Marriage Bonds--  
1854-1863 (M-W)  
Roll #135 Marriage Bonds--  
1854-1863 (W-Z)  
Roll #64 Will Books-1824-1846  
Roll #65 Will Books-1846-1862  
Roll #39 Inventory of Estates--  
1836-1872

Roll #67 Index to Deeds--  
1829-1880

### **GILES**

Roll #67 Deed Index-1810-1895

### **GRAINGER**

Roll #20 Marriage Records--  
1796-1888  
Roll #33 Inventories of Estates  
& Wills-1833-1852  
Roll #34 Inventories of Estates  
& Wills-1852-1892  
Roll #35 Index to Deeds--  
1797-1912

### **GREENE**

Roll #94 Marriage Records--  
1780-1855  
Roll #95 Marriage Records--  
1856-1888  
Roll #164 Wills-1828-1893  
Roll #165 Wills-1897-1931  
Roll #147 Estate Settlements--  
1802-1857  
Roll #148 Estate Settlements--  
1840-1855  
Roll #149 Estate Settlements--  
1855-1880  
Roll #88 Inventories-1828-1854  
Roll #89 Inventories-1854-1872  
Roll #87 Account of Insolvent  
Estates-1853-1901  
Roll #171 Deed Index-1785-1871

### **GRUNDY**

Roll #29 Marriage Records-1850-  
1894  
Roll #51 Wills-1838-1966  
Roll #23 Administrators' &  
Guardian Settlements--  
1841-1929  
Roll #27 Inventory Books--  
1857-1968  
Roll #26 Insolvent Estates--  
1856-1954  
Roll #52 General Index to Deeds--  
1859-1952

### **HAMILTON**

Roll #1 Marriage Records--  
1857-1880

### **HARDEMAN**

Roll #20 Marriage Records--  
1823-1859  
Roll #34 Wills-1824-1845  
Roll #35 Wills-1845-1901  
Roll #16 Executors' & Administra-  
tors' Settlements--  
1850-1859

Roll #17 Executors' & Administra-  
tors' Settlements--  
1859-1872

Roll #37 Deed Index-1822-1902

### **HARDIN**

Roll #27 Wills-1836-1842  
Roll #27 Settlements & Wills--  
1842-1900 (gaps)  
Roll #28 Deed Index-1835-1903

### **HAWKINS**

Roll #22 Marriages-1820-1880  
Roll #31 Wills-1797-1910  
Roll #32 Deed Index-1788-1906

### **HAYWOOD**

Roll #27 Marriage License &  
Bonds-1859-1868  
Roll #46 Wills-1826-1841  
Roll #47 Wills-1841-1844;  
1852-1918  
Roll #24 Inventories-Guardian,  
Administrators' &  
Executors' Settlements--  
1852-1866  
Roll #48 Deed Index-1826-1881

### **HENDERSON**

Roll #13 Deed Index--  
1856-1935 (gaps in years)

### **HENRY**

Roll #70 Marriage Records--  
1838-1882  
Roll #102 Wills-1822-1844  
Roll #103 Wills-1844-1863  
Roll #44 Administrators', Execu-  
tors' & Guardians'  
Settlements-1839-1870  
Roll #108 Deed Index-1822-1908

### **HICKMAN**

Roll #A-260 Administrators  
Settlements-1842-1923

### **HUMPHREYS**

Roll #8 Wills & Inventories--  
1837-1843; 1889-1904  
Roll #9 Wills & Inventories--  
1852-1857; 1868-1878  
Roll #10 Wills & Inventories--  
1847-1852  
Roll #12 Deed Index-1816-1907

### **JEFFERSON**

Roll #23 Marriages-1792-1881  
Roll #35 Wills-1792-1826  
Roll #36 Wills-1826-1845;  
1891-1921  
Roll #37 Wills-1792-1876

### JOHNSON

- Roll #11 Marriage Records—  
1838-1902
- Roll #18 Wills—1836-1932 (gaps)
- Roll #18 Settlements—  
1837-1884 (gaps)
- Roll #10 Administrator's Settlements—1848-1874
- Roll #19 Deed Index—1836-1910

### KNOX

- Roll #77 Marriages—  
1798-1875
- Roll #155 Settlements, Administrator's—1792-1824
- Roll #156 Settlements, Administrator's—1824-1844
- Roll #157 Settlements, Administrator's—1840-1848
- Roll #158 Settlements, Administrator's—1848-1858
- Roll #159 Settlements, Administrator's—1858-1865
- Roll #75 Estates, Insolvent—  
1859-1915
- Roll #97 Marriage Bonds—  
1792-1807 (A)
- Roll #98 Marriage Bonds—  
1807-1817 (A-L)
- Roll #99 Marriage Bonds—  
1817 (M-Z)-1822
- Roll #100 Marriage Bonds—  
1823-1827 (A-L)
- Roll #101 Marriage Bonds—  
1827 (M-Z)-1831
- Roll #102 Marriage Bonds—  
1832-1836
- Roll #103 Marriage Bonds—  
1837-1840
- Roll #104 Marriage Bonds—  
1841-1844
- Roll #105 Marriage Bonds—  
1845-1848
- Roll #106 Marriage Bonds—  
1848(H-Z)-1851(A-M)
- Roll #107 Marriage Bonds—  
1851(M-Z)-1854(A-M)
- Roll #108 Marriage Bonds—  
1854(N-Z)-1857(A-K)
- Roll #109 Marriage Bonds—  
1857(L-Z)-1859

### LAUDERDALE

- Roll #18 Marriage Bonds—  
1838-1886
- Roll #35 Wills—1837-1868
- Roll #33 Administrator's and Guardian Settlements—1847-1882
- Roll #16 Probate of Deeds, Wills, Inventories—1836-1847

- Roll #17 Insolvent Estates—  
1849-1905
- Roll #37 Deed Index—1836-1902

### LAWRENCE

- Roll #14 Marriages—1818-1889
- Roll #30 Wills—1829-1855
- Roll #31 Wills—1856-1868
- Roll #32 Wills—1858-1868;  
1887-1919
- Roll #33 Deed Index—1820-1908
- Roll #63 Marriage Bonds—  
1818-1829
- Roll #64 Marriage Bonds—  
1830-1839
- Roll #65 Marriage Bonds—  
1840-1849
- Roll #66 Marriage Bonds—  
1850-1859

### LEWIS

- Roll #5 Marriage Records—  
1847-1909
- Roll #6 Wills—1846-1936
- Roll #A468 Wills—1842-1856;  
1932-1967
- Roll #6 Estate Inventories—  
1846-1874
- Roll A471 Land sold for taxes—  
1847-1877
- Roll #10 Deed Index—1844-1926

### LINCOLN

- Roll #78 Marriages—  
1823-1828; 1838-1890
- Roll #131 Wills—1809-1861 (gaps)
- Roll #125 Settlements Administrator's & Executors—  
1842-1861
- Roll #72 Inventories of Estates—  
1840-1854; 1867-1876
- Roll #134 Deed Index—1810-1907
- Roll #A1567 Inventory of Estates—  
1853-1863
- Roll #A1567 Settlements of  
Estates—1842-1849

### MCMINN

- Roll #78 Marriage Records—  
1838-1879
- Roll #104 Wills—1819-1848
- Roll #105 Wills—1849-1862

### MCNAIRY

- Roll #24 Deed Index—1835-1901

### MADISON

- Roll #516 Marriage Records—  
1838-1871
- Roll #532 Wills—1825-1839
- Roll #533 Wills—1839-1854

- Roll #534 Wills—1854-1862
- Roll #A Deed Index—  
1821-1899 Direct
- Roll #B Deed Index—  
1821-1899 Reverse

### MARION

- Roll #42 Deed Index—1819-1921

### MARSHALL

- Roll #22 Marriages—1836-1877
- Roll #42 Wills—1835-1912
- Roll #11 Administrators' & Executors' Settlements—  
1839-1873
- Roll #14 Estate Inventories—  
1839-1880
- Roll #15 Estate Inventories—  
1850-1871
- Roll #A2188 Insolvent Estates—  
1857-1872
- Roll #59 Deed Index—1836-1940  
(A-O)
- Roll #60 Deed Index—1836-1940  
(P-Z)

### MAURY

- Roll #119 Marriages (whites)—  
1808-1867
- Roll #179 Wills—1806-1821;  
1823-1824
- Roll #180 Wills—1826-1832
- Roll #181 Wills—1832-1840
- Roll #182 Wills—1840-1847
- Roll #183 Wills—1847-1853
- Roll #184 Wills—1851-1898
- Roll #81 Estate Settlements—  
1853-1889
- Roll #105 Inventories and Settlements—1854-1857
- Roll #106 Inventories and Settlements—1857-1863
- Roll #193 Deed Index—  
1807-1905 Direct
- Roll #199 Deed Index—  
1807-1905 Reverse
- Roll #132 Marriage bonds—  
1809-1823
- Roll #133 Marriage bonds—  
1825-1833
- Roll #134 Marriage bonds—  
1835-1838

### MEIGS

- Roll #16 Marriages—1838-1916
- Roll #34 Wills, Inventories, & Settlements—1836-1881

### MONTGOMERY

- Roll #65 Marriage records—  
1838-1874



Roll #91 Will Books-1796-1821  
 Roll #92 Will Books-1818-1834  
 Roll #93 Will Books-1829-1840  
 Roll #94 Will Books-1840-1848  
 Roll #95 Will Books-1845-1850  
 Roll #96 Will Books-1853-1858  
 Roll #97 Will Books-1858-1869  
 Roll #107 Deed Index-1789-1870

### **MONROE**

Roll #29 Marriages-  
 1838-1845; 1847-  
 1852; 1856-1883  
 Roll #30 Marriages-  
 1856-1885  
 Roll #37 Wills-1833-1922  
 Roll #20 Inventories-  
 1853-1902  
 Roll #38 Deed Index-1820-1910

### **MORGAN**

Roll #17 Deed Index-  
 1818-1914 Direct  
 Roll #18 Deed Index-  
 1888-1914 Reverse

### **OBION**

Roll #18 Marriages-  
 1838-1878 (gaps); some  
 non-white -1866-1876  
 Roll #40 Wills, Inventories, & Set-  
 tlements-1834-1844  
 Roll #41 Wills, Inventories, & Set-  
 tlements-1844-1853  
 Roll #42 Wills, Inventories, & Set-  
 tlements-1853-1861  
 Roll #A1970 Executor's Bonds &  
 Settlements-1856-1859  
 Roll #44 Deed Index-1824-1884

### **OVERTON**

Roll #33 Wills-1801-1813  
 Roll #34 Wills-1814-1825  
 Roll #35 Wills-1823-1838  
 Roll #36 Wills-1836-1845  
 Roll #37 Wills-1835-3851  
 Roll #38 Wills-1851-1858  
 Roll #39 Wills-1850-1865  
 Roll #21 Inventories-1848-1861  
 Roll #32 Deed Index-1806-1904

### **PERRY**

Roll #16 Wills-1847-1959  
 Roll #18 Deed Index-1841-1925

### **PUTNAM**

Roll #7 Deed Index-1854-1911

### **RHEA**

Roll #36 Marriage records-  
 1808-1899

Roll #69 Wills, Settlements &  
 Inventories-1825-1902  
 Roll #71 Deed Index-1808-1922

### **ROANE**

Roll #80 Marriage records-  
 1801-1876  
 Roll #143 Wills and estate settle-  
 ments-1802-1824;  
 1828-1846  
 Roll #144 Wills and estate settle-  
 ments-1847-1863  
 Roll #155 Deed Index-1801-1887

### **ROBERTSON**

Roll #96 Marriage Records-  
 1839-1878  
 Roll #96 Wills & Inventories-  
 1832-1835

### **RUTHERFORD**

Roll #243 Marriage Records-  
 1804-1881  
 Roll #103 Deed Index-1804-1890

### **SCOTT**

Roll #39 Marriages-1854-1893  
 Roll #73 Deed Index-1850-1915

### **SEQUATCHIE**

Roll #9 Marriage records-  
 1858-1922  
 Roll #20 Wills and settlements-  
 1858-1968  
 Roll #21 Deed Index-1858-1968

### **SEVIER**

Roll #21 Marriages-1856-1883  
 Roll #27 Wills-1849-1922  
 Roll #27 Inventories-1856-1866  
 Roll #29 Deed Index-1846-1911

### **SMITH**

Roll #88 Marriage licenses and  
 bonds-1838-1881  
 Roll #104 Wills-1805-1809;  
 1812-1833  
 Roll #105 Wills-1828-1895  
 Roll #33 Estate Settlements-  
 1846-1856  
 Roll #34 Estate Settlements-  
 1857-1886  
 Roll #79 Inventories-1823-1827  
 Roll #80 Inventories-1827-1840  
 Roll #81 Inventories-1840-1846;  
 1848-1853  
 Roll #82 Inventories-1859-1878  
 Roll #109 Deed Index-1801-1926

### **STEWART**

Roll #29 Marriage records-

1838-1893

Roll #52 Wills-1812-1840  
 Roll #53 Wills-1840-1854  
 Roll #54 Wills-1854-1866  
 Roll #63 Deed Index-1800-1938

### **SULLIVAN**

Roll #27 Wills-1838-1915  
 Roll #28 Deed Index-1781-1930  
 (A-E)  
 Roll #29 Deed Index-1781-1930  
 (F-Mc)  
 Roll #30 Deed Index-1781-1930  
 (M-S)  
 Roll #31 Deed Index-1781-1930  
 (T-Z)

### **SUMNER**

Roll #72 Marriage records-  
 1845-1882  
 Roll #91 Wills-1789-1904  
 Roll #42 Administrator's & Ex-  
 ecutor's settlements-  
 1852-1857; 1870-1928  
 Roll #69 Inventories and settle-  
 ments-1836-1861  
 Roll #330 Inventories and settle-  
 ments-1847-1852;  
 1879-1887  
 Roll #96 Deed Index-1787-1947  
 (A-D) Direct  
 Roll #97 Deed Index-1787-1947  
 (A-D) Reverse  
 Roll #98 Deed Index-1787-1947  
 (E-K) Direct  
 Roll #99 Deed Index-1787-1947  
 (E-K) Reverse  
 Roll #100 Deed Index-1787-1947  
 (L-R) Direct  
 Roll #101 Deed Index-1787-1947  
 (L-R) Reverse  
 Roll #102 Deed Index-1787-1947  
 (S-Z) Direct  
 Roll #103 Deed Index-1787-1947  
 (S-Z) Reverse

### **TIPTON**

Roll #36 Marriages-1840-1889  
 Roll #40 Administrators Bonds  
 & letters-1824-1918  
 Roll #41 Wills-1824-1918  
 Roll #44 Deed Index-1824-1900

### **UNION**

Roll #1 Administrators settle-  
 ments-1859-1884  
 Roll #12 Deed Index-1856-1907

### **VAN BUREN**

Roll #12 Marriage records-  
 1840-1915

Roll #24 Wills and inventories-  
1840-1899  
Roll #25 Deed Index-1840-1898

#### **WARREN**

Roll #47 Marriage records-  
1852-1877  
Roll #83 Wills, Inventories,  
Sales & settlements-  
1827-1858

#### **WASHINGTON**

Roll #123 Marriage records-  
1787-1891  
Roll #169 Wills-1779-1889  
Roll #156 Estate Settlements-  
1796-1871  
Roll #114 Inventories of estates-  
1856-1888  
Roll #113 Insolvent Estates &  
Estate Inventories-  
1852-1867  
Roll #174 Deed Index-1783-1900  
Roll #128 McCown's WPA misc.  
record book-1778-1900

#### **WAYNE**

Roll #38 Marriage records-  
1857-1929

Roll #33 Inventories, Wills & Set-  
tlements-1848-1868  
Roll #61 Deed Index-1821-1937

#### **WEAKLEY**

Roll #34 Marriages-1843-1866  
Roll #53 Wills-1828-1842;  
1834-1861  
Roll #30 Inventories-1852-1858  
Roll #31 Inventories-1858-1881  
Roll #56 Deed Index-1825-1876

#### **WHITE**

Roll #40 Marriage records-  
1838-1910  
Roll #53 Settlements and Wills-  
1831-1893  
Roll #151 Settlements and Wills-  
1810-1828  
Roll #37 Inventories-1841-1942  
Roll #59 Deed Index-1809-1925

#### **WILLIAMSON**

Roll #70 Marriage Records-  
1800-1866  
Roll #87 Wills-1800-1825  
Roll #88 Wills-1825-1834  
Roll #89 Wills-1835-1842  
Roll #90 Wills-1843-1851

Roll #91 Wills-1851-1855  
Roll #92 Wills-1800-1864

#### **WILSON**

Roll #176 Marriage records-  
1802-1815  
Roll #177 Marriage records-  
1816-1818  
Roll #178 Marriage records-  
1819-1821  
Roll #179 Marriage records-  
1822-1824  
Roll #180 Marriage records-  
1825-1826  
Roll #181 Marriage records-  
1827-1829  
Roll #182 Marriage records-  
1830-1832  
Roll #183 Marriage records-  
1833-1835  
Roll #184 Marriage records-  
1836-1837  
Roll #216 Administrator's and  
executors settlements-  
1839-1868 (gaps)  
Roll #347 Land entry book  
Roll #1 Deed Index-1793-1895

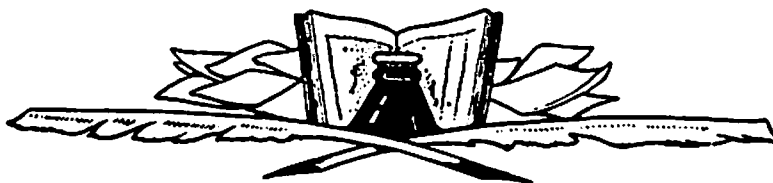
### **Renew your membership today!**

Dues \$18.00 if paid by June 30th.

Please use form included with this issue, or if missing, send your check or money order payable to Middle Tennessee Genealogical Society (MTGS), and mail to

**Middle Tennessee Genealogical Society  
P. O. Box 190625  
Nashville, TN 37219-0625.**

Dues after June 30th are \$21.00 to cover extra postage costs incurred in mailing back issues of the *Journal*.



## BOOK REVIEWS

by Shirley Wilson, CG

***Index to Tennessee Confederate Pension Applications*** by Samuel Sistler. Hardback, 5 1/2 x 8 1/2, 393 pp., copyright 1995. Order from Byron Sistler and Associates, 1712 Natchez Trace, PO Box 120934, Nashville, TN 37212. \$36.50 plus \$3.50 shipping and handling.

This is an index to Tennessee Confederate pension applications (widows, soldiers and black soldiers), arranged alphabetically. The information provided includes the county of residence, the unit in which the soldier served and the pension number. In the case of widows' pensions, the name of the soldier is also listed. It is important for the reader to know that Confederate pension applications were made to the state in which the veteran lived, which might not necessarily be the state from which he served. This book replaces the one prepared in 1964 by the Tennessee State Library and Archives, which has been out of print for many years and contained errors and omissions.

It is not surprising that Sam Sistler's first contribution to the genealogical field is an excellent one, in that he grew up assisting in and surrounded by the publications of his parents Byron and Barbara Sistler. The book is indeed a job well done and it is hoped that more of this young man's work will be forthcoming.

\* \* \*

***Mecklenburg County, North Carolina Minutes of the Court of Common Pleas and Quarter Sessions 1780-1800*** by Herman W. Ferguson. Softback, 8 1/2 x 11, 276 pp., complete name, place and subject index, copyright 1995. Order from Herman W. Ferguson, 600 Chad Drive, Rocky Mount, NC 27803-1512. \$27.50 postpaid.

Ferguson has produced yet another fine offering for the genealogical world in this book of court minutes. It is important to note that the book is a verbatim transcription of the court minutes as opposed to abstracts, which sometimes omit important information or inadvertently change the interpretation of a particular document.

A helpful fold-out map circa 1790 showing creeks, rivers, churches and land boundaries is found between pages 22 and 23. The preface includes definitions of legal terminology found within the text for those who don't have ready access to Black's Law Dictionary. The type is small, but quite legible and easy to read with all names listed in bold type. The index is a true joy in that it is a complete name index and also includes places and subjects. It takes one to the original page number, which is prominently displayed within the text. Since about six pages of the original text are compacted into one page in the book, the researcher is required to search a much smaller area of print to find the entry of interest.

\* \* \*

**1870 U. S. Census Sumner County, Tennessee.** Softbound, 8 1/2 x 11, 230 pp., complete name index, 1995. Order from The Sumner County Archives, 155 E. Main Street, Gallatin, TN 37066. \$20.00 plus \$2.50 postage with all proceeds being used for the benefit of the Sumner County Archives.

Prepared by volunteers at the Sumner County Archives, this publication is arranged by neighborhood in Civil Districts with a complete name index. The first two civil districts include residents of the area that became Trousdale County in 1870.

A map of Sumner County enables one to locate the general area of the civil district in question. The print is small but quite clear and easy to read. The information abstracted includes name, age, sex, race, and place of birth. Researchers are warned that the spelling of the census takers in this particular census was exceptionally poor.

The complete name index provides the researcher with a quick method to locate the correct entry and the neighborhood format makes it easy to search for other allied friends and relatives.

\* \* \*

#### BOOK REVIEWS:

Recently published books for review in the *Journal* should be sent directly to Mrs. Shirley Wilson, Book Review Editor, 106 Leeward Point, Hendersonville, TN 37075.

All materials become property of the book review editor to be appropriately distributed.

## UNPUBLISHED BIBLE RECORDS of MIDDLE TENNESSEE FAMILIES

### GRAY BIBLE<sup>1</sup>

*Bible in the possession of Mrs. Gray Gillespie and Mrs. Ernestine Huffman, Nashville, TN. Title page missing.*

[The Gray and Williams families lived in Davidson Co., TN. VGW]

#### "Certificate"

"This Certifies That The Rite of Holy Matrimony Was Celebrated Between Benajah Gray of Davidson County, Tenn. and Mary Ann Williams of The Same on The 14th of Oct. 1856 at Capt. Charles Johnsons by Rev. Hugh Bone Hill."

#### Births:

Martha Jane Gray eldest Daughter was Born August the 6th 1857.

Herschell Johnson Gray was Born August the 2d 1858.

Lou Ella Gray was Born Oct. 20th 1859.

Nellie Warwick Gray was Born April 24th 1861.

Charles Thomas Gray was Born Nov. 2d 1862.

Joseph Gray was Born May 27th 1864.

Maggie Sallie Gray was Born July 18th 1870.

Benajah Gray was born May 12th 1828.

Mary Ann Gray formerly Williams and wife of Benajah Gray was born April 10th 1834.

### WILLIAMS BIBLE

*Bible in the possession of Mrs. Gray Gillespie and Mrs. Ernestine Huffman, Nashville, TN. Title page missing.*

#### MARRIAGES:

Thos. J. Williams, Francis E. Glimp Married January The 20th ad. 1848.

Wm. Carrol Williams and Rachael Caroline Sloan was Married July 19th 1842.

Henry W. Williams and Mattie J. Gray was Married Oct. 1st 1876.

#### BIRTHS:

Thos. J. Williams Bornd June 11th Day Ad 1821.

Francis E. Williams Borne June 26th Day Ad 1831.

Willie P. Williams Son of Thos J. Williams and Francis E. Williams Borne Sept 25th Day Ad 1851.

Jemime Rily, 60 mo. Cas will be in Sept 8th.

#### BIRTHS:

Wm. Carrol Williams was born Sept 9th 1823.

Rachael Caroline Williams was born June 21, 1829.

James Ryby Williams was born Oct. 6th 1843.

Virginia Elizabeth Williams was born Ad. January 16th 1845.

Thos. S. Williams was born Nov. 25th Ad 1846.

Wm. Cass Williams was born Sept. 20th 1848.

Henry Wilburn Williams was born Sept. 14th 1850.

DeeWitt Clinton Williams was Born Dec. 13th 1855.

Laura Mable Williams was born Oct. 15th 1857.

Sallie Addie Williams was born July 18th 1859.

Benajah Carroll Williams was born May 7th/79.

Hannah Oran Williams was born Dec 7th 1880.

Minnie R. Williams was born April 8th 1883.

#### DEATHS:

Francis E. Williams Departed this life August the 3 1852.

Willie P. Williams Departed this life Aug the 15th 1852.

Mamie R. Williams died February 10th 1884.

<sup>1</sup> The first five Bible records were submitted by Virginia Gooch Watson who has annotated the records with additional information.

## JAMES MacLAUGHLIN BIBLE

*In the possession of Mrs. George L. Hughey, Jr., Smyrna, TN. The title page is missing.*

[The Bible belonged to James MacLaughlin, born Jan. 9, 1789 in Rowan County, North Carolina, died Aug. 8, 1873 in Franklin, Williamson County, Tennessee, buried in the Gillespie Cemetery on Hen Peck Lane, Franklin, TN. James MacLaughlin married Dec. 17, 1818 in Nashville, TN., to Mary Crawford Law who was born in 1795 in Baltimore, Maryland, and died Nov. 6, 1876 in Franklin, TN. and is buried in the Gillespie Cemetery beside her husband and daughter, Mrs. Mary Ann Richardson MacLaughlin Gillespie (Mrs. Randall McGavock Gillespie). James MacLaughlin was a school teacher and resided in Nashville, TN until the Federal occupied Nashville during the Civil War in 1862 at which time they moved to Franklin to live with their daughter, Mrs. Gillespie. VGW]

### Family Record - Marriages:

James MacLaughlin and Mary C. Law married at Nashville, Tenn. December 17th 1818.  
Randall McGavock Gillespie and Mary Ann Richardson MacLaughlin in Nashville, Tenn. December 24th 1855.

### Family Record - Births:

James MacLaughlin was born 9th January 1789 in Rowan County North Carolina.  
Mary Crawford Law MacLaughlin was born in Baltimore Maryland 1795.  
James Law MacLaughlin March 19th 1820 at Nashville Tenn.  
James Law MacLaughlin January 15th 1823 at Nashville Tenn.  
Mary Ann Richardson MacLaughlin August 20th 1824 at

Nashville, Tenn.

Alexander Richardson MacLaughlin at Nashville 4th August 1826.  
Ann Hart MacLaughlin at Nashville 26th March 1829.  
William Hart MacLaughlin at Nashville 24th March 1831.  
Henry Connor MacLaughlin at Nashville 26th October 1833.  
Elizabeth Law MacLaughlin at Nashville 17th May 1837.

### Family Record - Deaths:

James Law MacLaughlin died at Nashville, Tenn. on Tuesday 1/2 past 6 o'clock A.M. on the 8th day of April 1823 aged 3 years & 20 days.  
James Law MacLaughlin died in Nashville, Tenn. on Monday 1 1/2 o'clock A.M. 20th March 1848 aged 25 years 2 mos 15 days.

---

## MOORE - NELSON BIBLE

*In the possession of Mrs. Lawson Boone Nelson, 13812 Wispering Lake Drive, Sun City, Arizona.*

[The Moores and Nelsons lived in Rutherford County, Tennessee, near the Davidson County line. VGW]

Front page of Bible: "George C. Moore, Bible Bought of Mr. Collins March the 5th 1819 Price 15\$."

### Title page of Bible:

"The Holy Bible: containing the Old and New Testaments, together with the Apocrypha: translated out of the original tongues, and with the former translations diligently compared and revised, by the special command of His Majesty King James I of England. With marginal notes and references. To which are added An Index; An alphabetical table of all the names in the Old an New Testaments, with their significations. Tables of Scripture Weights, Measures, and Coins. John Brown's Concordance, &c. &c. Embellished with twenty-five maps and historical engravings.

Philadelphia: Printed and Published by M. Carey & Son, No. 126, Chesnut Street. 1818."

### Family Record: Marriages.

Sarah H. Moore was born May 5 1823  
Samuel B. Nelson and Sarah More Was Married June 5 1845  
Saml. B. Nelson born Oct. 31 - 1821  
Sarah H. Nelson was born May 5 1823

Mathew F. Nelson was born Ags 5 1846  
Frederick Nelson was born Sept 9. 1848  
Louis M. Nelson was born Nov 24 1850  
Lucy Nelson was born May 30 1853  
S. B. N. Jr. was born Sept. 9 1855  
Charlie Nelson was born Jan. 19 1858



**JUNE 30TH!**

e 30th. After that date the dues are \$21.

---

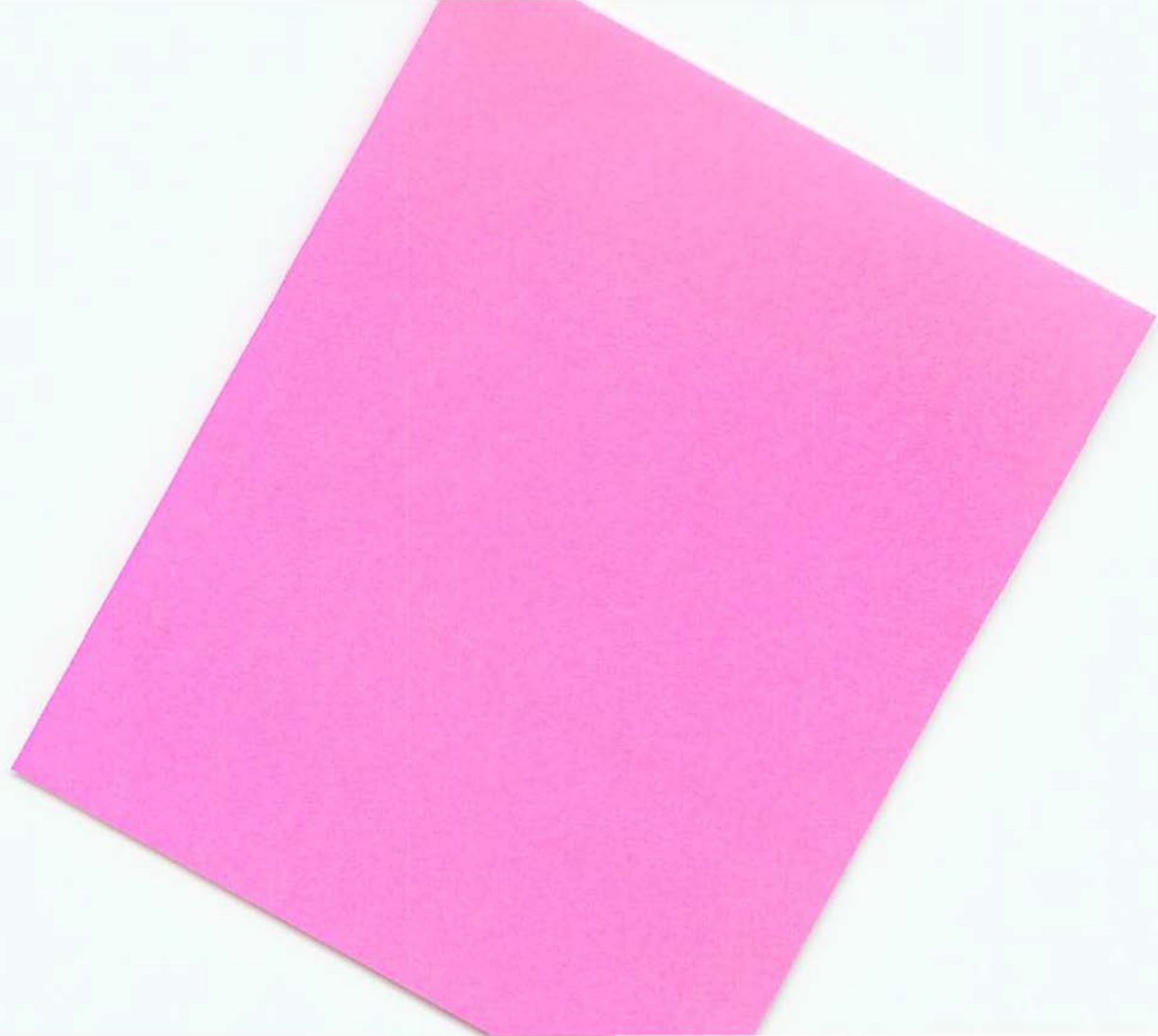
---

---

---

ennessee Genealogical Society (MTGS).

**Genealogical Society**  
**Box 190625**  
**N 37219-0625**



Sally Nelson was born Ags 3, 1860 and died Ags 8 1840  
 Jeffey Nelson was born May 4. 1864.  
 Lucinda Moore died Mar 10 1847  
 Augustus F. Moore died Sept 1 1846  
 Nancy M. Moore died Jan 1 1842  
 Frederick Nelson was married the 24 January 1868  
 Jeff Nelson and Ida Boone were married August 6, 1897

#### Family Record. Births

Sarah H. Moore was born May the 5 1823  
 Thomas D. Moore was born Sept the 15 1825  
 Nancy M. Moore was born Augst the 28 1827  
 Augustus F. Moore was born June the 24 1829  
 Grandchildren:  
 Lewis Melove Nelson was born October, 14 1898  
 Lawson Boone Nelson was born December 9, 1901  
 Gladys Lorraine Nelson was born March 15, 1904  
 Newton Tillman Nelson was born August 1908  
 Sarah H. Moore was born May the 5 1823  
 Thomas D. Moore was born Sept the 15 1825  
 Nancy M. Moore was born August the 28 1827  
 Augustus F. Moore was born June the 24 1829  
 Ida Boone was born April 8, 1875, Shelbyville Tenn

#### Family Record Births:

Samuel B. Nelson was born Oct. 31, 1821

Sarah H. More was born May 5 1823  
 Mathew Fletcher Nelson was born August 5, 1846  
 Fredrick Nelson was born Sept 6 1848  
 Lewis M. Nelson was born, Sunday, the 24th of November 1850  
 Lue Nelson was Born May 30 - 1853 Sunday  
 S. B. Jr. was Born Sept 9 - 1855 Sunday  
 Charlie Nelson was born Jan 19 - 1858

#### Deaths:

Lucinda Moore died March 10, 1847  
 Fredrick A. Moore died Sept. 1. 1846  
 Nancy M. Moore died Jan. 1 1842  
 Mathew F. Nelson died January the 5, 1868.

#### Family Record Deaths:

Mathew F. Nelson died January 5 1868  
 Samuel B. Nelson died on the morning of March 21 at 5 minutes past 3 oclock in the year 1898  
 Sarah H. Nelson died Feb 5 at 7 oclock 1908  
 Lewis Nelson died Aug the 3 1938 ten at night  
 Lou Nelson died May 27 at 5-15 oclock Morning 1932  
 Charlie Nelson - 10:10 A.M. July 12, 1941  
 Jefferson Davis Nelson died June 10, 1962  
 Lewis Melone Nelson died  
 Newton Tillman Nelson died

## EDMONDSON BIBLE

*In the possession of Mrs. Amanda Keeble (Gooch) Edwards (Mrs. J.T.), Smyrna, Tennessee.*

[The Edmondson's came from Essex County, VA., to Rutherford County, Tenn., in 1832 and settled near Smyrna in Rutherford Co., TN. VGW]

#### Title page of Bible:

"Kimber and Sharpless' Stereotype Edition. The Holy Bible, containing the Old and New Testaments, translated out of the original tongues, and with the former translations diligently compared and revised, with Canne's Marginal Notes and References. To which are added, An Index; an alphabetical table of all the names in the Old and New Testaments, with their significations; Tables of Scripture weights, measures, and coins, &c. Stereotyped by E. White, New York. Philadelphia: Published and sold by Kimber and Sharpless, at their Book-Store, No. 93 Market Street. 1824."

#### Family Record - Marriages:

John Edmondson was married to Amanda S. Randolph on October 11th 1830.  
 (Note: The bride was Mrs. Amanda Sarah (Keeble) Randolph, widow of Peyton Randolph of Rutherford Co., TN.)  
 Catesby Edmondson was married to Bettie L. MacLaughlin June 25th 1868.  
 Pinchney Edmondson was married to Josephine Sanders

July 13th 1871.

David Edmondson was married to Sallie C. Donoho Aug. 28th 1873.  
 Harriet A. Edmondson was married to Henry C. MacLaughlin June 20th 1866.

#### Family Record - Births:

Peter Randolph was born in May the 19 1823.  
 Sarah Randolph was born September 27, 1824.

William W. Edmondson was born July the 22 1831.  
Catesby Edwin Edmondson was born December the 4, 1833.

Robert Paine Edmondson was born July the 16 1836.  
Thomas Pinkney Edmondson was born April 22 1838.  
George Thompson Edmondson was born June the 16 1840.  
Harriet Amanda Edmondson was born April the 20 1844.  
David W. Edmondson was born March 1846.  
John Edmondson was born Feb. 14th 1806.  
Lucy Plummer wife of William Edmondson Mother of John Edmondson.

Robert Edmondson  
Thomas Edmondson  
Cate Edmondson  
Mary Muse  
Eliza Keeble  
Ann Cradock  
Lucy Cradock  
Susan Rucker.

[Note: the last 8 names were the children of Lucy Plummer Edmondson.]

#### Family Record - Births:

Sallie Shrewsbury, Wife of Walter Keeble, Mother of Amanda S. Edmondson.

[Note: Amanda Sarah Keeble was the daughter of Sallie Shrewsbury and Walter Keeble; married first Peyton

Randolph; married 2d John Edmondson)  
Mrs. Amanda S. Edmondson Died September 29, 1847.  
Miss Sarah Randolph died Nov. 30th 1851.  
Dr. Peter Randolph died July 7th 1856.

#### Family Record - Deaths:

Robert P. Edmondson Departed this Life December 1855.  
William Catesby Edmondson Departed this Life June 11th 1846.

Eliza F. Keeble Died January 26, 1847.  
Susan Rucker died March 1883.  
John Edmondson died September 28th 1887.  
George T. Edmondson died March 1865.  
William W. Edmondson died Dec. 1864.  
Catesby Edmondson died May 15, 1909.  
Robert P. Edmondson Mar. 8th 1926.  
David Edmondson died July 1914.  
Pinckny Edmondson Oct. 1924.  
Lucy Plummer, Mother of John Edmondson.

[Note: Lucy Plummer Edmondson died August 16 (about) in 1866 in Rutherford Co., TN., buried in the Muse Cemetery, Smyrna, TN., behind the old Sewart Air Force Base Housing, 500 yards north of the John Coleman School. The Muse Cemetery was on the original William J. and Mary (Edmondson) Muse homeplace, later known as the Barnett place. VGW]

William Edmondson, Father of John Edmondson.

## J. K. and M. E. GANT BIBLE<sup>2</sup>

*In possession of Robert W. Anglea, 7 Robinson Ave., Rome, GA 30165-3637*

Published by Jones Brothers & Co., Cincinnati, Ohio; Philadelphia, Pa.; Chicago, Ill. 1879

### BIRTHS

J. K. Gant was born Nov. 12, 1836  
M. E. Gant was born March 26, 1837  
W. P. Gant was born Oct. 8th, 1856  
J. M. Gant was born June 4, 1858  
M. E. Gant was born Jan. 24, 1860  
C. F. Gant was born May 31, 1862  
I. J. Gant was born June 9, 1865  
M. A. Gant was born August 19, 1868  
M. E. Gant was born Sept. 12, 1871  
Jessie Dorris was born Dec. 1801

### MARRIAGES

E. B. Anglea and W. E. Gant December 24th, 1875

W. P. Gant and S. E. Anglea June 20th 1878  
J. M. Gant and C. H. Anglea April 8th, 1880  
W. M. Burton, M.D., and Fannie Gant October 20, 1881  
R. E. Anglea and I. J. Gant (no date)  
I. M. Hill and M. A. Gant Nov. 4, 1886  
G. O. Perdue and M. E. Gant Feb. 11, 1891

### DEATHS

Jessie Dorris died Oct. 21, 1891  
Mary Dorris died Oct. 20, 1889  
J. M. Gant died July 5, 1906  
M. E. Anglea died Mar. 8, 1900  
Belle Anglea died Feb. 22, 1901  
Oather Anglea died Mar. 2, 1906

<sup>2</sup> Two records submitted by Robert W. Anglea, 7 Robinson Ave., S. W., Rome, GA 30165-3637.

M. Elizabeth Gant died Mar. 29, 1908  
J. K. Gant died Nov. 17, 1908  
E. B. Anglea died Nov. 13, 1905  
R. E. Anglea died Jan. 10, 1909  
Emma T. (or F. ?) Alexandr died Aug. 12, 1912  
W. P. Gant died June 30, 1915  
Mrs. Fannie Burton died Feb. 24, 1922

W. M. Burton died Sept. 27, 1902

Uncle Jake Gant come to Tenn. Aug. 1913.

Note: There are a lot of old tin-type pictures in back of Bible that are not identified. One male person dressed in what appears to be a preachers robe. RWA

---

## **JOHN F. ANGEL FAMILY BIBLE**

*In possession of Helen Angel Corder, 604 S. Vicksburg, Marion, IL 62959*

Front: American Bible Society, New York, 1866

### **BIRTHS**

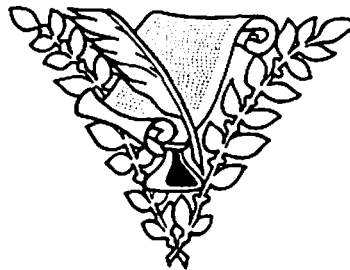
Leussey Angel was bornd Nov. the 26, 1819  
John F. Angel bornd May the 15th 1821  
Robert Angel was bornd March 15, 1822  
P. E. B. Angel was bornd April 2, 1826  
W. W. Angel was bornd July 23, 1827  
C. T. Angel was bornd Jan. 22, 1829  
Burtin Angel was bornd May 4, 1833  
Martin Angel was bornd Jan. 21, 1831  
M. L. Angel was bornd Nov. 19, 1835  
S. E. Angel bornd Aug. 27, 1838

### **MARRIAGES**

W. H. Angel was married Sep 24, 1872 to Polly A. Grant  
Lewis C. Pulley & Lucy Angel was married Novem. the 2, 1876  
Mary J. Angel was married to L. H. Turner May the 3rd 1887

This family migrated from Sumner County, Tennessee, to Williamson County, Illinois, in the late 1850s. Entries were transcribed from this Bible as read in original. RWA

*To be continued.*



## SPRING CLEANING, 1879.<sup>1</sup>

Do not clean but one room at a time, as it is a bad plan to have the whole house in confusion at once. It is best to commence with the attic.

Before beginning on your spring cleaning, remove the curtains, all the movable furniture, and the carpets. With a broom and dust-pan remove all dust from the floor. Then with a wall-brush thoroughly sweep and dust the ceiling and side-walls, window and door frames, pictures and chandeliers. Then go over the floor again, removing the dust that has fallen from the ceiling and walls. Then proceed to wash all the paint in the room. If it be white paint, use whiting or such other preparations as are recommended for the purpose. If it be varnished, or in imitation of oak or walnut, wipe with a cloth dipped in milk-warm water. If the wood work in the room be of unvarnished walnut or oak, wipe it off first, and then oil it, rubbing in the oil well.

Then with a soft flannel rag and a cake of sapolio clean every piece of marble in the room. Next wipe the mirrors carefully with a flannel rag, wrung out of warm water and dipped in a little whiting, or you may rub a little silver soap on the rag. The gilding must be merely dusted, as the least dampness or a drop of water will injure it.

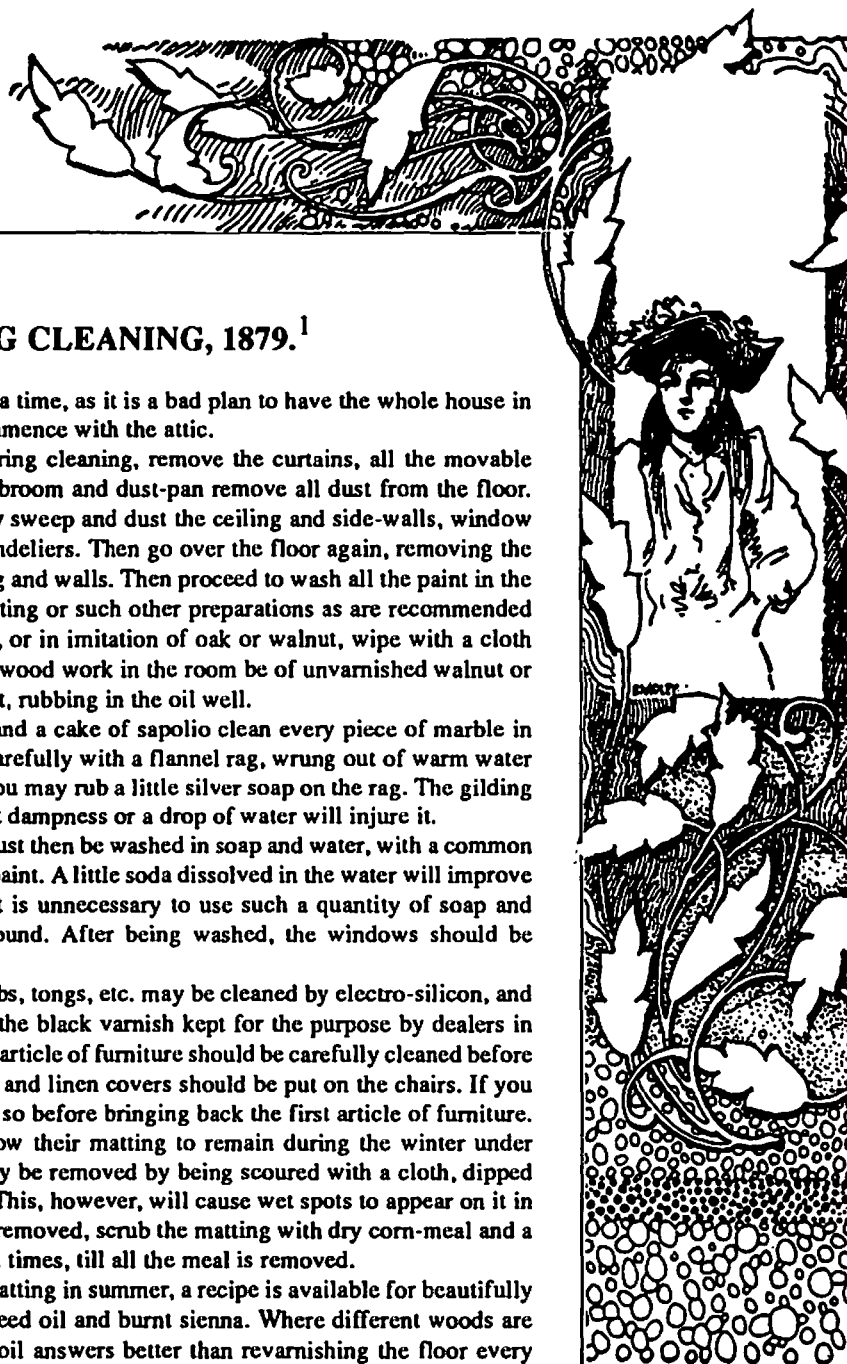
The windows (sash and all) must then be washed in soap and water, with a common brush such as is used for washing paint. A little soda dissolved in the water will improve the appearance of the windows. It is unnecessary to use such a quantity of soap and water as to splash everything around. After being washed, the windows should be polished with newspapers.

The metal about the door-knobs, tongs, etc. may be cleaned by electro-silicon, and the grates may be varnished with the black varnish kept for the purpose by dealers in grates, stoves, etc. Every chair and article of furniture should be carefully cleaned before being brought back into the room, and linen covers should be put on the chairs. If you are going to put down matting, do so before bringing back the first article of furniture. Some housekeepers, however, allow their matting to remain during the winter under their carpets. Spots on matting may be removed by being scoured with a cloth, dipped first in hot water and then in salt. This, however, will cause wet spots to appear on it in damp weather. After the spots are removed, scrub the matting with dry corn-meal and a coarse cloth. Sweep it over several times, till all the meal is removed.

For persons who do not use matting in summer, a recipe is available for beautifully coloring the floor with boiled linseed oil and burnt sienna. Where different woods are used alternately in the floor, this oil answers better than revarnishing the floor every spring.

As soon as the carpets are taken up, have them nicely shaken, swept, and brushed on both sides. Every spot should be carefully washed and wiped dry. The carpets should then be rolled up smoothly, with tobacco sprinkled between the folds, sewed up in coarse linen cloths, and put away till autumn.

<sup>1</sup>Marion Cabell Tyree, ed., *Housekeeping in Old Virginia* (Louisville, Kentucky: John P. Morton and Company, 1879), pp. 496-498.





## **TENNESSEE SUPREME COURT RECORDS**

(Contributed by Betsy Ragsdale and Gale Williams Bamman, CG)

**Tennessee Supreme Court Records, Box 225,  
Middle Tennessee, 1875**  
Dennis Dozier Exparte  
(Original Bill heard in County Court of  
Cheatham County)

F. H. Stump and wife Martha E. Stump would respectfully represent that Martha E. Stump is a daughter of Dennis Dozier, that Dennis Dozier is an old man about seventy-five years old, that about seven years since he was attacked by disease believed to be softening of the brain that since then he had been in feeble health and his mind so destroyed that he is not capable [of] governing himself...that he is possessed of considerable property real and personal which is being wasted and destroyed by person not authorized to use it. That said Dennis Dozier has a wife Mrs. Harriet Dozier and children as follows Absolom P. Dozier David T. Dozier Ann Knight wife of S. S. Knight and Martha E. Stump wife of T. M. Stump and also has the following grandchildren Dennis Dozier son of Enoch Dozier deceased and James Henry and Jack Dozier children of James Dozier deceased all adults. Said Dennis Dozier resides in Cheatham County on Hydes Ferry Turnpike about 6 or 7 miles from Ashland City....

**Tennessee Supreme Court Records, Box 225,  
Middle Tennessee, 1873**  
Cardwell vs Cardwell  
(Original Bill heard in Smith County)

The Bill of Complaint of William G. Berry and his wife Nancy C. Berry and of Evaline A. Cardwell, wife of defendant Buckner S. Cardwell, David C. Cardwell, Elizabeth H. Cardwell, Lavinia E. Cardwell, Louisa H. Cardwell and Victory O. Cardwell the last five minors who together with said Evaline A. sue by their next friend J. C. Sanders all citizens of Smith County against Buckner S. Cardwell, Leonard H. Cardwell and John McClarin, citizens of like residence.

Complainants respectfully represent and show your Honor that by decree of this Honorable Court in the case of the administrator, legatees and devisees of David Hogg, dec'd., exparte, rendered as now recollected at the February Term 1855 the share of Com-

plainant Evaline A. Cardwell in the estate of her father, said David Hogg, was vested and limited as follows, to wit: "It further appearing to the Court that the petitioners Levisa R. Evaline A. and Mary A. are femes covert the two last named having issue....

**Tennessee Supreme Court Records, Box 225,  
Middle Tennessee, 1875**  
Rains vs Humphreys  
(Original Bill heard in Davidson County  
Chancery Court)

Felix. R. Rains against Jacob Fisher, Joseph W. Fisher, James A. Fisher, Frederick F. Fisher, Henry C. Fisher, Edwin D. Fisher, Ann W. Fisher James H. Dodd and West H. Humphreys.

Complainant F. R. Rains a citizen of Davidson County beings this his bill of complaint against the defendants James H. Dodd a citizen of the county aforesaid and W. H. Humphreys who has removed himself from this state. Jo. W. Fisher for his guardian all of whom reside in the county aforesaid, the said James A. Joseph W. and Henry C. Fisher who are non-residents of the State of Tennessee.

The said Frederick E. Fisher is dead and your Orator has been unable to find any conveyance from him to said Humphreys, but he knows the fact that aid Humphreys has been in possession and in the use and occupation of said land claiming it as his own for part of twenty years or more...

Ann. W. Fisher is the widow and Jacob Fisher, Joseph W. Fisher James A. Fisher Frederick F. Fisher Henry C. Fisher and Edwin D. Fisher are the heirs and only heirs of the said Frederick E. Fisher, dec'd....

**Tennessee Supreme Court Records, Box 225,  
Middle Tennessee, 1874**  
Thompson vs Fogg, Admr. of Barrow  
(Original Bill heard in Davidson County  
Chancery Court)

C. M. Thompson a citizen of the State of Arkansas complainant vs . G. M. Fogg Junior administrator of W. Barrow deceased, Ann Barrow widow of the said Washington Barrow deceased and John Shelby Barrow, the grandchild and only heir at law of the said

Washington Barrow all of Davidson County....

**Tennessee Supreme Court Records, Box 238,  
Middle Tennessee, 1873**

Hardin Warden vs W. L. Reese and L. L. Leftwich,  
admires., and others

(Original Bill heard in Lincoln County Chancery Court)

Your complainant Hardin Warden a resident of the County of Lincoln would respectfully represent unto your Honor that heretofore and on or about \_\_\_\_[blank] day of \_\_\_\_[blank] 18\_\_[blank] his father [shown elsewhere in the transcripts as Robert Warden] departed this life intestate in said county leaving him surviving your Complainant and John Warden George McAfee and his wife Dorinda James Isom and his wife Jane and James Warden, Emma Steelman Caroline Brown, Thos. Warden, Daniel Warden and Franklin Warden his heirs and legal distributees.

That at \_\_\_\_[blank] Term 186\_\_[blank] John H. Steelman was by said county court duly appointed the administrator of said intestate...that said intestate at the time of his death was the owner of some considerable personal estate among which was a Negro boy a slave the property belonging to said intestate's estate named George....

**Tennessee Supreme Court Records, Box 238,  
Middle Tennessee, 1873**

Johnson *et al.* vs Moody *et al.*

(Original Bill heard in Dickson County Circuit Court)

J. D. Johnson and wife Mary C. Johnson who sues by her next friend J. D. Johnson D. C. Orr, W. B. Walterson and wife W. A. Walterson A M. Burney and wife S. L. Burney, George A. Brown and wife, E. C. Brown, J. C. Orr, C. T. Swanson and wife E. C. Swanson, and S. M. Orr vs Wm. Moody, Olsey Wyatt, Thomas McNeilly, Robert McNeilly, Daniel Rice and S. L. Graham, the latter a resident of Hickman County.

The plaintiffs sue the defendants to recover the following tract of land lying in Dickson County on the waters of Garner's Creek of Pine River....

**Tennessee Supreme Court Records, Box 238,  
Middle Tennessee, 1875**

Upchurch vs Crouch and others

(Original Bill heard in Fentress County  
Chancery Court)

Jane Upchurch a citizen of said county, petitioner: Petition to sell lands Jane Upchurch vs Elizabeth Crouch Martin Crouch and Mark Givins and Anna Givins his wife and James Kidd and Martha Kidd his wife and Elias H. Crouch and George W. Crouch, Admr. of Wm. Crouch, dec'd. and Alfred Jones and Mary Jones his wife and James K. Readman and Margaret Readman his wife Stokely Crabtree and Elizabeth Crabtree his wife are all citizens of said state and county and petitioner would show that Alexander Rich and Elizabeth Rich his wife and Aron Cypress and Sarah Cypress his wife James Evans and Nancy his wife and David. F. Crouch and John K. Morgan and Elvira M. Morgan his wife and Timothy Buck and Sarah his wife are non-residents of the state. Your petitioner would state that William Crouch departed this life sometime in August 1868 intestate leaving no issue and the above named parties are the only heirs of the said William Crouch, dec'd. Your petitioner would further state that he said half-brother William Crouch died seized and possessed of certain tracts of lands lying in said county and other valuable properties with considerable amount of cast at interest. Your petitioner would state that the widow Elizabeth Crouch since the death of her said husband William Crouch has sold and conveyed a portion of said lands to one James Crouch, Jnr. also other portion to Sarah Crouch, colored, for a trifling consideration....

**Tennessee Supreme Court Records, Box 238,  
Middle Tennessee, 1873**

Balch vs Jo. C. Newman

Original Bill heard in Davidson County  
Chancery Court)

Robt. M. Balch and Chas. C. Balch residents at Haywood County, Tennessee Jane W. Williams Anna B. Wilson James E. Wilson Harriet B. Wilson Alexandrine M. Wilson and Mary L. Wilson resident at Georgetown District of Columbia Wm. B. Heiskill a resident of Philadelphia, Pennsylvania and Elisa Jane Heiskill his wife William C. Balch a resident of Prince William County, Virginia, Y. I.[?] Wilson a resident of the State of North Carolina Wm. Q. Smith administrator of Stephen B. Wilson dec'd Felix R.[?] Cheatham P. S. Nichol residents of Davidson County, Tennessee against Jo. C. Newman a resident of Davidson County, William McMurray, Admr. of Jas. A.

McMurray, dec'd. and Catherine McMurry residents of Sumner County, Tennessee and Elizabeth Smith a resident of Rutherford County....

**Tennessee Supreme Court Records, Box 238,  
Middle Tennessee, 1874**

Mickle vs Brown and O'Neal,  
Executors of Jno. C. Mickle, dec'd.  
(Original Bill heard in Montgomery County  
Chancery Court)

R. A. Mickle, M. C. Mickle G. W. Clanton and wife S. A. Clanton Thomas Cooper and wife A. M. P. Cooper all of the County of Graves, State of Kentucky, J. G. Mickle of the City of Little Rock State of Arkansas A. B. Mickle of the County of \_\_\_\_ [blank] State of Texas and Mrs. L. E. Mickle of the County of Montgomery and State of Tennessee against Albert G. Brown and Peter O'Neal of the County of Montgomery and State of Tennessee and represent to your Honor that they are the legatees of Jno. C. Mickle who died in the County of Montgomery on or about August \_\_ [1859] having duly made and published his last will and testament....

**Tennessee Supreme Court Records, Box 234,  
Middle Tennessee, 1873**

Charles F. Wall *et al.* vs John H. Allen *et al.*  
(Original Bill heard in Williamson County  
Chancery Court)

Bill of Complaint of Joseph C. Allen Executor of Lawson Allen and Wm. H. Boyd and Charles F. Wall, citizens of Williamson County vs John H. Allen and others.

Your Orators would respectfully show unto our Honor that on the 21st day of October 1858 Lawson Allen made and published his last will and testament...in which he appointed his sons Richard H. Joseph C. Lawson R. Samuel B. David J and John H. Allen as his executors. On the \_\_\_\_ [blank] day of \_\_\_\_ [blank] 1861 he died. At the November Term of the County Court of Williamson County the said will of Lawson Allen was duly proven and admitted to probate and all the persons named as executors except Complainant Joseph C. Allen appeared in open court and declined to act as executors and your Orator Joseph C. Allen as by law required letters testamentary issued to him as Executor of Lawson Allen, dec'd.

Your orators Wm. H. Boyd and Charles F. Wall together with John F. Cox, Lawson Allen, Samuel B. Allen John H. Allen and David J. Allen became the sureties of your orator Joseph C. Allen as such executor...At the same time...the wife and widow of Lawson Allen to wit the defendant Mary A. Allen dissented to the provisions made in the will for her by her husband and the County Court appointed Commissioners to lay off and assign to said widow her dower out of the said estate and to allot to her one-ninth or a child's interest in the slaves belonging to the estate...

Your orator would therefore pray that the following named persons be made parties defendant to this bill, viz: John H. Allen, Mary A. Allen both of whom are citizens of Williamson County, Lawson Allen and Samuel B. Allen both of whom are non-residents of the state, living in Mississippi, David J. Allen, Richard H. Allen and John F. Cox and Martha B. Cox his wife all of whom reside in Henry County, Tennessee, together with the heirs of Wm. H. Allen, dec'd., who are William, James, Nancy and Sallie Allen, living in Davidson County, Tennessee, William Allen, Nancy Lemons, wife of \_\_\_\_ [blank] Lemons and Angeline Alexander wife of \_\_\_\_ [blank] Alexander who live in Henry County, Tennessee, and Sarah Jane Miller and Thomas Miller her husband who are non-residents, living in Illinois....

**Tennessee Supreme Court Records, Box 234,  
Middle Tennessee, 1874**

James A. Hudgins, Admr., etc. vs  
W. C. & J. W. Fanning *et al.*  
(Original Bill heard in Franklin County  
Chancery Court)

The Bill of Complaint of James A. Hudgins, Administrator with the will annexed of Benjn. Fanning, dec'd., a citizen of Franklin County, Tennessee against Julia Fanning the widow of Benjn. Fanning, dec'd., Thomas B. Fanning, a minor, and who has no regular guardian, William C. Fanning, J. W. Fanning Victoria Reynolds, wife of W. M. Reynolds, Elizabeth Nixon, wife of Alfred Nixon, Martha Holliday wife of A. D. Holliday, Francis Freeman, Jackson Freeman, Bettie Freeman and William Freeman all four of whom are minors and have no regular guardian, and children of America Freeman, wife of W. M. Freeman, both of whom are dead, Sarah A. Fanning, the widow of Samuel Fanning, dec'd., Mary E. Fanning and Samuel S. Fanning, the latter being a minor, and has no regular guardian, and both children of Samuel Fanning.

ning a deceased son, who died after Benjn. Fanning, Marilda Anderson, wife of N. F. Anderson, Mahala Reynolds wife of Pleasant Reynolds, children of Polly George, wife of William George, who are dead, all citizens of Franklin County, Tennessee.

Your Complainant respectfully shows that on the \_\_\_\_[blank] day of \_\_\_\_[blank] of 1870, Benjn. Fanning, late of Franklin County, died....

**Tennessee Supreme Court Records, Box 266,  
Middle Tennessee, 1873**

H. D. Lester, Trustee, etc. vs Allen W. Vick, Admr.  
and others  
(Original Bill heard in Wilson County  
Chancery Court)

The Bill of Complain of Henry D. Lester, trustee for Martha Johnson, a feme covert and her children Philip L., Francis, Mary, Nancy, John, Robert, Penelope, and Martha Johnson. Said Lester is a citizen of Wilson County, vs A. W. Vick, Administrator of Dabney Carr, dec'd., Martha Carr, John t. Mansfield, surviving executor of Granville Mansfield, dec'd., and Paulding Anderson all citizens of Wilson County...

Humbly complaining your orator would represent that Jemima Carr by her last will and testament....gave to Dabney Carr in trust for Martha Johnson and her children...all her estate except a few specific legacies....

**Tennessee Supreme Court Records, Box 265,  
Middle Tennessee, 1874**

Catherine Amis vs D. S. Maxwell and wife  
and others  
(Original Bill heard in Maury County)

Jonathan Amis died in Maury County on 6 November 1869...leaving his widow the Compl't. Catherine Amis and his three daughters Compl't. Mary J. Perry and defts. Derinda Maxwell and Mrs. Nelson. He had been married three times. Mrs. Perry and Mrs. Nelson were daughters by his first marriage and Derinda Maxwell by the second. He had no children by his third wife, the Compl't Catherine.

On 18 June 1869, about four months before his death he made a will...reciting that he owned 222 acres of land upon which he resided, which he devised to his wife Catherine and to his daughter Derinda Maxwell jointly during the lifetime of the said Cath-

erine and at her death the whole of it to Derinda....

**Tennessee Supreme Court Records, Box 265,  
Middle Tennessee, 1874**

S. R. Anderson vs Turner Foster  
and

Thomas H. Malone vs Sallie A. Ellis  
(Original Bill heard in Williamson County)

The Bill of Complaint of S. R. Anderson of the County of Davidson in the State of Tennessee complainant against Turner S. Foster, Trustee for Harriet R. Foster his wife and said Harriet R. Foster of the State of Wisconsin and non-residents of the State of Tennessee and Sallie A. Ellis of the County of Williamson in the State of Tennessee, and James Gardner, \_\_\_\_[blank] Gardner, Ned Orin[?] col. and Jacob Tyler col. all of said County of Williamson and others, defendants....

**Tennessee Supreme Court Records, Box 266,  
Middle Tennessee, 1873**

Solomon Springer vs S. B. Hammonds, *et al.*  
(Original Bill heard in Giles County  
Chancery Court)

Solomon Springer a citizen of Lawrence County, Tennessee, complainant vs Samuel B. Hammonds Admr. of A. B. Hammonds, dec'd. and Mary Hammonds, Oliver Appleton and his wife Arabella M. Appleton formerly Arabella Hammonds, James Hammonds, Malena Hammonds, James Hammonds and Albert Hammonds heirs at law of A. B. Hammonds, dec'd. citizens of Giles and State of Tennessee, defendants.

Your orator must respectfully show unto your Honor that during the lifetime of A. B. Hammonds, dec'd. said A. B. Hammonds and William Hammonds executed to your orator their joint and several promissory note for the sum of one hundred and sixty two dollars in gold and that said A. B. Hammonds and Willis Hammonds have departed this life. The estate of Willis Hammonds has been settled and the administration thereof cleared as you orator is informed and believes. Said A. B. Hammonds died leaving him surviving his widow Sabra S. Hammonds and his five children, the defendants to wit Mary C. Hammonds, Arabella M. James, Malena and Albert. His widow, Sabra has since died and Arabelle M. has intermarried with the defendant Oliver Appleton and the defendant

S. B. Hammonds is the administrator of the estate of the said A. B. Hammonds estate....

**Tennessee Supreme Court Records, Box 268,  
Middle Tennessee, 1873**

**Florence A. Puryear vs Annie Puryear *et al.***  
(Original Bill heard in Williamson County  
Chancery Court)

The Bill of Complain of Florence A. Puryear, a citizen of Williamson County, Tennessee, against Annie Puryear, Florence Puryear, Jr. and H. Jordan Puryear, all of whom are infants of tender years and without general guardian, M. T. DeGraffenried and W. M. Daniel, administrators of M. T. DeGraffenried, dec'd., and Asher Thomas, administrator of J. Jordan Puryear, dec'd., all of whom are citizens of Williamson County except W. M. Daniel who is a citizen of Montgomery County, Tennessee, defendants.

And thereupon Complainant respectfully shows unto your Honor that J. Jordan Puryear, late a citizen of Williamson County, Tennessee, departed this life intestate, on or about the \_\_\_\_[blank] day of \_\_\_\_[blank] of 1871, leaving surviving him his widow, the Complainant and his children and heirs at law Annie Florence and J. Jordan Puryear....

**Tennessee Supreme Court Records, Box 268,  
Middle Tennessee, 1876**

**Saml. M. Neely, Admr. vs M. E. Wiles and others**  
(Original Bill heard in Maury County  
Chancery Court)

The Bill of Complaint of Samuel M. Neely, Administrator of Powhatan D. Franklin...against Amanda Franklin and Mrs. Scott citizens of Kentucky P. H. Franklin and one or more brothers and sisters citizens of Missouri or Kentucky, Willis R. Franklin, W. D. Walker, Alfred Fleming, Dabney Goodloe and others creditors P. D. Franklin and M. E. Wiles Elizabeth Stubblefield and her husband Samuel Stubblefield Mary Martin Elizabeth Martin Lilly Martin and Sally Martin the last five being minor children of T.[?] J. Martin, dec'd., Sacky Long all citizens of Maury County except Elizabeth Stubblefield a citizen of Sumner County, David Martin a citizen of Giles County Russell Martin a citizen of Mississippi, Mary Nicholson Caroline Nicholson, Annie Nicholson and Andrew J. Nichols, the last four being minors and citizens of Maury County, children of Sally M.

Nicholson, Susan Bradshaw, Martha Horsley, and her husband John Horsley Marian Bradshaw citizens of Maury County Mary M. Bean and her husband C. C. Bean Sacky Baker and her husband \_\_\_\_[blank] baker, citizens of Arizona.

Complainant respectfully shows that in 1868 Powhatan D. Franklin died in Maury County, the place of his residence, leaving no wife or children....

**Tennessee Supreme Court Records, Box 269,  
Middle Tennessee, 1876**

**W. W. Seay, Extr. of Jonathan Bailey, dec'd.  
vs Byllenda Walker and others**  
(Original Bill heard in Wilson County  
Chancery Court)

The Bill of Complaint of W. W. Seay, Extr. of Jonathan Bailey dec'd. against Byllenda Walker, Byllenda Pannell Lucy Mitchell and Elizabeth Smith all of whom are citizens of the state of Kentucky; Sallie Hart and her husband James Hart, citizens of the State of Texas, Susan James and her husband Leroy James, Cinderrilla Turner and her husband Wm. Turner, Cleopatra Moore, Harriett Harris and her husband John Harris, Amanda Hubbard and her husband Wm. Hubbard, B. B. Bailey all of whom are citizens of Smith County, Tennessee, Jane Barbee and her husband Joshua W. Barbee James H. Donnell Mrs. Casandria H. Bailey and Robt. G. Donnell a minor without any regular guardian, citizens of Wilson County, Tennessee.

Your orator would respectfully show your Honor that one Jonathan bailey departed this life in the County of Wilson in the month of June 1872, leaving a last will and testament in which your orator and David Young were nominated executors....

**Tennessee Supreme Court Records, Box 269,  
Middle Tennessee, 1874**

**Henry Houze, Admr. vs Jno. C. Young *et al.***  
(Original Bill heard in Giles County  
Chancery Court)

The Bill of complaint of Henry Houze, Admr. etc. of Archibald S. Young, dec'd., against Mendoza Marks, Marion Marks, Wm. D. and Ann E. Smith, Jno. C. Young, Nathaniel A. Napoleon B. Young, Sarah F. Mary J., Louisa C. Adella C. Almanza Charles, Mattie, Nancy M. Archibald O Young the last nine minors, Samuel Yokely, John T Curtis, Elizabeth Tay-

lor, R. B. Gibson M. M. Dobbins, Thomas W. Hays, B. L. Burgess W. T. Clark and the Planters Bank of Tennessee, Bryant H. Peden, Admr. of John Abernathy Colmore B. Sutton Thomas Martin, Samuel Turner, J. H. F. Henderson, D. S. Dryden of Missouri, widow, children, heirs, distributees, and creditors of Archibald S. Young, dec'd.

Complainant would respectfully represent and show unto your Honor that Archibald S. Young departed this life on the 14th of March 1862 in the County of Giles the place of his residence at the time of his death, intestate, leaving him surviving his

widow Mendoza Young and thirteen children to wit: Ann E. Smith, John C. Nathaniel A. Napoleon B. Sarah F. Mary J. Louisa C. Adella C. Corrine A. Martha M. Nancy M. and Archibald O. Young, as his only heirs and distributees, that previous to the death of the intestate his oldest daughter Ann E. had intermarried with William D. Smith... that said intestate died seized and possessed of about one thousand acres of land, out of which the widow is entitled to dower...and possessed of twenty seven slaves, the names and ages of whom are here filed Marked "B" and made a part of this Bill....

*To be continued.*

SOLOMON G. MORTON<sup>1</sup>  
Obituary dated June 18, 1859

Submitted by Thomas M. Green

This brother died at his residence near Murfreesboro, Tenn. on the 21st of May in the 57th year of his age. He had been for many years a Baptist during most of which he had acted in the capacity of deacon. Bro. Morton was until the last two years a resident of Davidson County and had among its citizens a large number of acquaintances. He was esteemed as a kind neighbor, an honorable gentleman and a decided Christian.

Bro. Morton, during his last illness manifested perfect resignation to the will of God. He was willing to live or die as the Lord might decide. Having disposed of all his worldly belongings, he patiently waited for the hour of his departure. He fell asleep in Jesus, leaving an affectionant wife and three children to mourn

his loss. Seldom have I known a bereaved widow and fatherless children to indulge deeper grief at the loss of a husband and father. This indulgence of sorrow while it is a testimony of the worth of the departed, does credit the hearts of the surviving members of the family.

Bro. M.'s funeral was attended by a large concourse of citizens who were addressed from the sermon that as we have borne the image of the earthly we shall also bear the image of the heavenly. The body was committed to a grave dug in a quiet lovely spot selected by Bro. M. a short time before his last illness. It is a beautiful place and the birds often sing in the branches of the trees. Sing on sweet songster for you will not disturb the still sleeper beneath you.

J. M. P.

<sup>1</sup> "Tennessee Baptist, 1857-1860," Samford University Library, Birmingham, Alabama, call # MFP 3.8.

## Selected Cemetery Records of Wilson County, Tennessee<sup>1</sup>

by Thomas A. Partlow, 1978

### PROSPERITY CEMETERY

(Located at Auburntown, Tennessee)

1. Mai Patton, born 1873; died 1955.
2. Gerome Patton, born 1872; died 1964.
3. Carrill Raikes, born 1902; died .
4. Ollie Raikes, born 1904; died .
5. Odie Raikes, born 1886; died 1966.
6. Epp Raikes, born 1882; died 1967.
7. Maude B. Grandstaff, born 1877; died 1965.
8. Isaac Grandstaff, born 1865; died 1945.
9. Mary L. Watson, born 7 April 1917; died 2 November 1973.
10. Roy W. Watson, born 15 June 1913; died 20 July 1975.
11. Florence Watson, born 1887; died 1936.
12. Vivian Marler, born 7 May 1925; died .
14. J. C. Marler, born 6 March 1925; died 26 February 1945.
15. Lena Moore Hancock, born 1889; died 1954.
16. Harlon Hancock, born 1881; died 1958.
17. John C. Johnson, born 1876; died 1936.
18. Susie Johnson, born 1876; died 1970.
19. Deliah Keaton, born 1871; died 1955.
20. William M. Keaton, born 1864; died 1931.
21. Ida Williamson, born 1891; died 1937.
22. Jessie Allen Williamson, born ; died .
23. Infant Jennings, 9 March 1927. Son of Hudson Jennings.
24. Maud Foutch Jennings, born 25 January 1887; died 27 October 1966.
25. William Hudson Jennings, born 17 November 1886; died .
26. Ida Chumbley, born 1888; died 1956.
27. Sam Chumbley, born 1889; died 1969.
28. Ella Dodd Hamilton, born 1872; died 1957.
29. Hal Ray Dodd, born 1896; died 1923.
30. Fossie L. Knight, born 1893; died 1965.
31. Claude Knight, born 1885; died 1971.
32. Cecil M. George, born 1895; died .
33. Maggie L. George, born 1900; died 1958.
34. Thurman Hayes George, born 1912; died .
35. Erastus M. McMillen, born 20 February 1865; died 23 June 1938.
36. Theodocia F. McMillen, born 21 August 1888; died 19 June 1975.
37. Louisa Jennings, born 1847; died 1934.
38. Hezekiah Jennings, born 1850; died 1938.
39. Mary Lela Foutch, born 3 December 1882; died 8 June 1962.
40. Andrew M. Foutch, born 30 October 1882; died 1 July 1973.
41. Sara Elizabeth Becton, born 1923; died 1933.
42. Margaret Louise Becton, born 1920; died 1922.
43. Eddie Taylor Becton, born 1889; died 1946.
44. Kittie Hawkins Becton, born 1896; died 1948.
45. W. L. S.
46. M. P. S.
47. Daisy Reeves Lewis, born 19 August 1881; died 12 March 1905.
48. David C. Lewis, born 13 April 1879; died 25 March 1918.
49. Alvin D. Lewis, born 12 July 1901; died 27 April 1919.
50. Patricia Nell Owen, born 16 December 1958; died 6 January 1959.
51. Jetson E. Snyder, born 1913; died .
52. Alton D. Snyder, born 1917; died .
53. Della May Cooper, born 1892; died 1938.
54. Ben Cooper, born 1888; died 1939.
55. "Little Angel"
56. Candy Davis, born 1888; died .
57. Charlie Davis, born 1885; died 1946.
58. H. G. Davis, born 1909; died 1927.
59. Elijah L. Hawkins, born 23 August 1893; died 9 January 1972. Private, U. S. Army. World War I.
60. Infant Lewis, born 3 December 1903; died 4 December 1903. Daughter of D. C. Lewis and wife.
61. Victoria Lewis, born 18 February 1898; died 24 March 1902. Daughter of W. R. Lewis and Mary J. Lewis.
62. William R. Lewis, Com Sgt., Company K., 5th Tennessee Cavalry.
63. Clarence R. Owen, born 14 January 1908; died 15 March 1975.
64. Thelma Bryan Owen, born 20 February 1913; died .
65. Joe M. Hutchinson, born 1894; died 1955.
66. Louise Hutchinson, born 1929; died 1938.
67. Mallie Foutch, born 24 September 1896; died .
68. Grover Foutch, born 5 May 1893; died 6 January

<sup>1</sup>Continuation of second volume of unpublished Cemetery Records for Wilson County, Tennessee. Used with permission of compiler.

- 1974.
69. Shelah R. Robinson, born 24 July 1866; died 2 February 1921.
70. Angie I. McAdoo, born 14 September 1870; died 17 November 1849. Wife of Shelah R. Robinson.
71. Anna Elizabeth Jennings, born 1876; died 1904.
72. Dayton Wayland Jennings, born 1902; died 1919.
73. C. Dulaney Jennings, born 1869; died 1956.
74. Arra Jennings, born 1876; died 1957.
75. R. B. Chumbley, born 7 October 1845; died 11 June 1904.
76. Nancy A. Chumbley, born 20 December 1839; died .
77. W. R. Lewis, Jr., born 1863; died 1915.
78. Alice Lewis, born 1864; died 1944.
79. Louise Jenkins Robinson, born 1908; died 1965.
80. Matthew Hop Robinson, born 1895; died 1964.
81. Lyla Bryan Robinson, born 1893; died 1939.
82. Ray Robinson, born 1893; died 1953.
83. Lassie Robinson, born 1898; died 1975.
84. Harry B. Fuston, born 19 March 1916; died 23 July 1925.
85. Allie R. Fuston, born 1892; died .
86. Pearl B. Fuston, born 1891; died 1948.
87. Nell H. Hayes, born 17 March 1913; died .
88. Earl Hayes, born 8 August 1899; died 22 February 1969.
89. Lucille Gaither Hancock, born 7 June 1908; died .
90. E. Ray Hancock, born 17 March 1904; died .
91. W. D. Hancock, born 1872; died 1914.
92. Cantrell Hancock, born 21 April 1869; died 3 December 1957.
93. Tennie Thomas, born 1865; died 1947.
94. Sarah E. Barrett, born 11 January 1847; died 21 April 1906. Age 59 years, 3 months, and 10 days. Wife of H. F. Barrett.
95. Thomas Groom, born 5 August 1858; died 30 July 1898.
96. Sadie Woods, born 15 November 1895; died 12 August 1969.
97. Frank Woods, born 1893; died 1969.
98. James Edward Wilson, born 15 September 1935; died 11 March 1940.
99. Linda Robinson Bogle, born 1942; died 1963.
100. J. T. Hayes, born 18 February 1918; died 4 October 1975.
101. Infant Jennings, 1 March 1914. Son of J. C. Jennings and Toria Jennings.
102. Elizabeth F. Davenport, born 16 June 1903; died 8 January 1976.
103. Palmer F. Davenport, born 20 May 1901; died .
104. Etta M. Fuston, born 1899; died 1940.
105. John A. Fuston, born 1859; died 1945.
106. Essie Dunn, born 22 November 1894; died 18 May 1940.
107. Cecil Dunn, born 25 December 1887; died 10 July 1972.
108. H. A. Fite, born 16 June 1861; died 19 July 1928.
109. Effie Fite, born 16 July 1881; died .
110. Grace Crook Fite, born 16 May 1906; died .
111. James D. Fite, born 19 February 1900; died 26 May 1968.
112. N. Ermine Tarpley, born 6 February 1920; died .
113. J. Almond Tarpley, born 1 April 1909; died 30 May 1967.
114. Samuel Turney Tarpley, born 1949; died 1952.
115. Lela Hancock.
116. R. T. Hancock, born 1844; died 1927.
117. Nannie G. Hancock, born 1862; died 1915.
118. Lela Hancock, born 1882; died 1923.
119. Robert S. Roberts, born 10 October 1871; died 4 July 1928.
120. Nanie Roberts, born 15 February 1869; died 17 October 1955.
121. Infant Roberts, born 10 March 1906; died 13 March 1906. Son of R. S. Roberts.
122. Hallie H. Bryan, born 13 December 1870; died 2 August 1951.
123. Thomas M. Bryan, born 23 April 1868; died 21 December 1938.
124. Delta Bryan, born 14 September 1891; died 26 November 1894. Son of T. M. Bryan and Hallie Bryan.
125. Ann Jeff Hancock, born 29 January 1835; died 2 January 1908.
126. Richard Alexander Hancock, born 17 January 1827; died 29 July 1897.
127. Addie Hancock, born 4 September 1864; died 9 August 1885. Age 20 years, 11 months, 5 days. Daughter of R. A. Hancock.
128. Delta Hancock, born 1868; died 1890. Age 21 years, 4 months, 29 days. Son of R. A. Hancock.
129. Myrtle Nash Hancock, born 17 October 1875; died 25 June 1893.
130. J. Clarence Hancock, born 1913; died 1954.
131. Gladys Dunn Hancock, born 1914; died 1949.
132. Nina Lee Francis, born 1898; died .
133. James Houston Francis, born 26 December 1897; died 13 January 1962.
134. Ruth Helen Francis, born 20 December 1935; died 20 December 1935.
135. Joe E. Turney, born 1884; died 1960.
136. Alta P. Turney, born 1889; died 1976.
137. Etta Hancock, born 24 April 1891; died 26 May 1958.
138. Thomas N. Hancock, born 14 July 1875; died 22 October 1947.
139. Melvin Roberts, born 1902; died .
140. Beulah M. Roberts, born 1900; died 1975.
141. Ruth Jeanette Roberts, born 27 February 1925; died 24 January 1928.
142. J. W. Hays, born 9 June 1832; died 18 November



- 1919.
143. Elizabeth Hays, born 13 March 1832; died 18 January 1915.
144. W. F. Sneed, born 1848; died 1883.
145. F. V. Sneed, born 1851; died 1885.
146. Anna P. Sneed, born 8 June 1811; died 18 March 1894.
147. M. E. Sneed, born 27 August 1833; died 27 October 1917.
148. J. H. Sneed, born 14 February 1843; died 3 November 1920.
149. Jonnie Murphy, born 7 March 1908; died .
150. Lorene Murphy, born 24 November 1908; died 15 September 1966.
151. Calvin Bly, born 1863; died 1934.
152. Sara Allen Bly, born 1867; died 1930.
153. Zola Ford, born 1879; died 1915.
154. William D. Ford, born 1877; died .
155. James Keaton, born 26 October 1821; died 28 December 1907.
156. Lucinda Keaton, born 12 May 1841; died .
157. Julia Keaton, born 25 March 1834; died 31 May 1903.
158. Unmarked grave.
159. Dixie Lee E. Tarpley, born 29 November 1909; died 20 June 1971.
160. Reverend V. Wayne Tarpley, 18 March 1908.
161. Maud R. Edwards, born 1883; died 1957.
162. Charles P. Rich, born 19 June 1852; died 28 July 1930.
164. Sarah Ann Rich, born 12 November 1852; died 28 July 1930.
164. Sarah Ann Rich, born 12 November 1852; died 24 June 1913.
165. Loyd Blythe, born 3 October 1906; died .
166. Mary Blythe, born 3 October 1902; died .
167. Claude W. Johnson, born 26 August 1901; died 9 August 1967.
168. Lula Johnson, born 29 July 1908; died .
169. Matlene Rollins, born 23 December 1928; died 30 April 1929.
170. James A. Turney, born 1889; died 1970.
171. Hewtee Byrn Turney, born 1893; died 1974.
172. J. W. Jewell, born 1 August 1873; died .
174. Nannie Jewell, born 24 May 1875; died .
175. Oakley Jewell, born 19 November 1916; died 15 February 1919.
176. George L. Smith, born 9 July 1833; died 16 February 1901.
177. A. A. Smith, born 8 August 1836; died 5 July 1914.
178. Infant Rich, 9 April 1920. Daughter of F. T. Rich.
179. Jessie E. Rich, born 6 February 1870; died 10 July 1923.
180. S. W. Rich, born 17 February 1859; died 7 June 1939.
181. Grace Hancock, born 31 May 1898; died .
182. Cecil Hancock, born 24 September 1890; died 11 January 1964.
183. Sallie H. Crook, born 23 May 1910; died .
184. Riley O. Crook, born 26 July 1908; died .
185. Minnie O. Crook, born 27 July 1883; died 4 August 1972.
186. Elijah L. Crook, born 28 June 1881; died 2 April 1962.
187. Mary Jo Stone Crook, born 23 August 1902; died .
188. Grady M. Crook, born 17 September 1902; died 23 June 1964.
189. Dollon Tallant, born 1871; died 1961.
190. N. Burr Tallant, born 1875; died 1939.
191. Willie Bell Jennings, born 13 February 1896; died 28 August 1948.
192. Altie M. Tallent, born 5 May 1913; died .
193. Halbert J. Tallent, born 9 February 1910; died .
194. Oakley Jewell, born 1889; died 1916.
195. Ina Jewell, born 1887; died 1914.
196. Lelia Jewell Hays, born 1881; died 1910.
197. Jacob Jewell, born 1884; died 1908.
198. Juda M. Jewell, born 1854; died 1914.
199. T. A. Thomas, born 1853; died 1939.
200. E. E. thomas, born 1856; died 1939.
201. J. S. Owen, born 25 November 1847; died 5 April 1921.
202. Amanda E. Groom, born 21 January 1853; died 18 August 1939. Wife of J. S. Owen.
203. Bonnie Jennings Owen, born 3 April 1885; died 25 August 1974.
204. Ervin Owen, born 25 August 1878; died 12 May 1957.
205. Laura Allen Turney, born 13 September 1879; died 4 May 1934.
206. M. M. Turney, born 26 December 1872; died 9 October 1958.
207. Grave.
208. Grave.
209. Nora Jewell, born 1876; died 1922.
210. Cynthia Fite, born 1863; died 1938.
211. W. A. Fite, born 1857; died 1944.
212. Ruby Fite Hays, born 27 September 1899; died .
213. Marvin B. Hays, born 2 December 1898; died 25 June 1970.
214. Mallard McKinley Cooper, born 18 December 1900; died 3 February 1975.
215. Rufus W. Cooper, born 1868; died 1940.
216. Letha Cooper, born 1878; died 1952.
217. Nezzie K. Stoner, born 1901; died 1930.
218. John M. Stoner, born 1895; died 1956.
219. Mary Ona Hays, born 1880; died 1958.
220. Joe Hays, born 1879; died 1965.
221. J. J. David, born 8 April 1844; died 17 April 1914.
222. M. E. David, born 6 October 1835; died 9 December 1906.
223. J. H. David, born 29 April 1842; died 9 December

- 1906.
224. Less D. Jennings, born 1882; died 1960.
225. Mamie Jennings, born 1890; died 1971.
226. Robert Joseph Green, born 12 January 1959; died 19 January 1959.
227. Pataray Y. Bryan, born 1903; died .
228. Edgar B. Bryan, born 1901; died 1970.
229. Betty Jean Bryan, born 1931; died 1941.
230. Nannie K. Turney, born 31 October 1876; died 20 October 1943.
231. Claud M. Turney, born 25 November 1874; died 20 July 1952.
232. John Paul Hays, born 1921; died 1945. The inscription reads: "He died for his country."
233. Mark H. Hays, born 1901; died 1964.
234. Nonice S. Hays, born 1903; died 1962.
235. J. T. Hays, born 1868; died .
236. Bell Hays, born 1879; died 1922.
237. Lula A. Owen, born 17 March 1883; died 16 September 1893. Daughter of J. D. Owen and S. C. Owen.
238. Cllaud E. McAdoo, born 1875; died 1927.
239. Maggie S. McAdoo, born 1881; died .
240. Erby Jennings Owen, born 7 February 1925; died 6 August 1967. Tennessee RM3 U.S.N.R.
241. Ethel Fite Allen, born 28 June 1906; died 8 April 1963.
242. Novella Allen, born 20 July 1883; died 14 September 1960.
243. William Allen, born 10 June 1878; died 5 April 1962.
244. Pauline Preston, born 13 December 1912; died .
245. Claud L. Preston, born 29 April 1895; died 6 October 1966.
246. Myrtle T. Preston, born 14 February 1894; died 27 May 1931.
247. Margaret K. Preston, born 19 May 1922; died 25 February 1941.
248. Chester Patterson, born 19 February 1896; died .
249. Arrah Estes Patterson, born 2 May 1898; died 2 October 1976.
250. Hiram Smith Estes, born 1866; died 1948.
251. Sarah Chapman Estes, born 1870; died 1949.
252. Mae K. Corley, born 1891; died 1968.
253. Bessie Corley, born 12 April 1896; died 12 August 1917.
254. Pete Corley, born 9 February 1888; died 27 March 1937.
255. Claude C. Hays, born 24 April 1877; died 17 September 1954.
256. Vivian Hays, born 23 April 1894; died .
257. Joy Hays, born 23 April 1904; died 4 November 1909.
258. William J. Turney, born 13 November 1847; died 16 February 1926.
259. Amanda Jane Fite Turney, born 24 November 1848; died 11 August 1928.
260. Minnie Turney, born 20 March 1882; died 5 January 1936.
261. Henrietta George Robinson, born 10 September 1904; died 6 September 1959.
262. Cornelius H. Keaton, born 1885; died 1968.
263. Helen Fite Keaton, born 1888; died 1920.
264. Mary S. Fite, born 1856; died 1911.
266. Ina B. Allen Jennings, born 19 December 1908; died .
267. Joe Darden Jennings, born 7 September 1912; died .
268. Inez Hays Matthews, born 14 August 1926; died 27 May 1963.
269. Elbert Clark McAdoo, born 1 October 1919; died 22 December 1962.
270. Earl McAdoo, born 12 January 1881; died 3 May 1956.
271. Anna S. McAdoo, born 17 September 1891; died 4 December 1962.
272. Francis McAdoo, born 1928; died 1930.
273. Robert Fred Jennings, born 1926; died 1973.
274. Betty Ruth Jennings, born 1932; died .
275. Mattie A. Jennings, born 1890; died 1954.
276. Allen Jennings, born 2 August 1918; died 22 July 1922.
277. Ray Jennings, born 1888; died 1955.
278. W. B. Cooper, born 3 May 1875; died 17 April 1940.
279. Virgil George, born 25 November 1910; died 30 March 1954. Sq. A. A. E., World War II.
280. Mary George, born 1873; died 1962.
281. Sam George, born 1870; died 1957.
282. Woodrow Wilson Fite, born 1912; died 1926.
283. Lemuel Hudson Fite, born 1909; died 1926.
284. R. Marlin, born 23 February 1885; died 5 September 1908. Son of John H. Fite and Mary S. Fite.
285. Mollie Groom, born 30 July 1890; died 14 March 1913. Wife of P. M. Groom.
286. Leburn Groom, born 8 July 1882; died 27 February 1918.
287. Lemma Byrn Groom, born 8 October 1891; died .
288. Mark Steven Hayes, born 1954; died 1967.
289. Ella Allen, born 17 November 1879; died 1 March 1968.
290. John Allen, born 17 October 1873; died 11 June 1953.
291. Mary Elizabeth Lewis, born 31 October 1882; died 6 August 1919.
292. Calvin Higgins, born 1896; died 1923.
293. Louise Lewis, born 1916; died .
294. Shelton Lewis, born 1909; died 1967.
295. David Lee Lewis, born 22 August 1944; died 10 February 1961.
296. E. E. Fite, born 1865; died 1935.
297. Prudie Taylor Fite, born 1877; died 1935.
298. Emily Doak Taylor, born 27 March 1858; died 2 January 1924.
299. Myra Elizabeth Taylor, born 20 February 1871; died 6 February 1940.

300. L. D. Hamilton, born 24 July 1863; died 10 January 1969.
301. Ida C. Hamilton, born 1 October 1861; died 12 January 1927.
302. Charles Groom, born 18 December 1879; died .
303. W. H. Groom, born 21 January 1860; died 4 February 1901.
304. Bettie Groom, born 13 December 1857; died .  
Wife of W. H. Groom.
305. Charley E. Groom.
306. Myrtle C. Groom.
307. Ida May Hays, born 5 October 1888; died 22 September 1956.
308. George Alton Hays, born 21 April 1884; died 8 October 1933.
309. Clyde T. Hays, born 28 March 1926; died 8 October 1933.
310. Vernon Kennedy, born 25 June 1894; died 30 August 1964.
311. Carrie B. Kennedy, born 28 July 1898; died .
312. John Robinson, Sr., born 1888; died 1923.
313. Lillie Bryan Robinson, born 1891; died 1923.
314. Cynthia McKee Hamilton, born 16 August 1880; died .
315. Samuel Hayes Hamilton, born 28 September 1879; died 9 December 1951.
316. Belle Mina Hamilton, born 1907; died 1951.
317. Eural Hamilton, born 19 May 1902; died 1 April 1919.
318. John Hawkins, born 4 June 1832; died 24 August 1912.
319. Mary E. Hawkins, born 9 January 1839; died 1 September 1913.
320. Ida Hancock, born 7 December 1874; died 17 January 1963.
321. Otis Groom, born 16 March 1888; died 24 July 1899.
322. M. F. Higgings, born 20 October 1867; died 30 September 1899. Wife of Ras Groom.
323. Ras Groom, born 3 December 1865; died 21 February 1944.
324. Bertha H. Groom, born 2 February 1877; died 4 December 1964.
325. J. Morton Odom, born 15 November 1887; died 14 July 1969.
326. Lela S. Odom, born 30 June 1897; died .
327. Osce Spurlock, born 1868; died 1952.
328. J. E. Spurlock, born 1865; died 1933.
329. Willie Berry Edwards, born 1881; died 1967.
330. Earl Edwards, born 1903; died 1965.
331. Ruby Edwards, born 1919; died .
332. Willie B. Kennedy, born 28 July 1889; died 22 January 1963.
333. Susie Maie Kennedy, born 5 December 1891; died 11 February 1975.
334. Carlyle Kennedy, born 1887; died 1945.
335. Ruby Kennedy, born 1895; died 1951.
336. Corinne Pruett, born 1902; died .
337. Wilson Pruett, born 1901; died 1967.
338. D. C. Pruett, born 10 April 1930; died 27 July 1930.
339. Wendel Lester Robinson, born 8 July 1928; died .
340. Helen Keaton Robinson, born 1895; died 1952.
341. James V. Bryan, born 1865; died 1949.
342. Mary E. Bryan, born 1871; died 1955.
343. Jimmie E. Bryan, born 1905; died .
344. Harold H. Hamilton, born 2 January 1918; died 22 January 1975. Corporal, U. S. Army.
345. Maibell B. Jennings, born 6 August 1904; died .
346. Walter Ray Jennings, born 13 July 1911; died 14 January 1965.
347. Elvis D. Jennings, born 1900; died 1969.
348. Flossie Jennings, born 1896; died 1959.
349. Hulen Jennings, born 1924; died 1941.
350. Callie Vance, born 19 August 1901; died 26 March 1962.
351. Chalmus Vance, born 4 January 1897; died 14 June 1955.
352. Susie Mai Vance, born 10 July 1924; died 9 April 1930.
353. Paul H. Davis, born 5 February 1899; died 3 March 1920.
354. Lurlia Armstrong Davis, born 21 June 1901; died .
355. Howard Davis, born 1874; died 1953.
356. Nevada Davis, born 1876; died 1943.
357. Edna Mai Hays, born 1879; died 1943.
358. John Wes Hays, born 1872; died 1946.
359. Infant Hays. Son of John Hays and Edna Hays.
360. Ida Hancock, born 7 December 1874; died .
361. Berthan Hancock, born 2 February 1877; died .
362. Ethel Hancock, born 14 November 1879; died .
363. Richard R. Hancock, born 2 August 1840; died .
364. Sue Lester Hancock, born 2 October 1843; died 28 June 1901.
365. Hubert H. Hancock, born 13 August 1882; died 30 July 1883.
366. Fannie L. Hancock, born 16 February 1884; died .
367. William Forrest Hancock, born 8 January 1886; died .
368. Ruby Jo Swanger, born 12 July 1939; died .
369. Victor Swanger, born 17 January 1923; died 1 January 1973.
370. Vickie Marie Swanger, born 15 November 1861; died 14 February 1965.
371. William R. Robinson, born 1863; died 1942.
372. Lucindy Robinson, born 10 September 1913; died .
373. Grady H. Murphy, born 14 March 1913; died .
374. Mary Lucille Murphy, born 10 September 1913; died .
375. Armstead L. Owen, born 1866; died 1944.
376. Cora Alice Owen, born 1871; died 1932.
377. Nettie Robinson, born 1873; died .
378. Robert Robinson, born 1869; died 1934.
379. Robbie Grace Robinson, born 5 March 1897; died

- 29 September 1900.
380. E. A. P.
381. Frances Gladys Paty, 2 years, 6 months.
382. J. H. Paty, born 8 August 1852; died 30 September 1920.
383. Edna A. Paty, born 12 April 1858; died 24 December 1891.
384. Jessie Mai Paty, born 18 August 1886; died 9 August 1896.
385. William McKinley Robinson, born 13 December 1899; died 3 August 1967.
386. Gladys H. Robinson, born 15 August 1903; died .
387. Charlie A. Vantrease, born 21 January 1897; died .
388. Lilburn V. Vantrease, born 28 July 1899; died .
389. Alton D. Turney, born 1 March 1885; died .
390. Elpha Rich Turney, born 20 October 1888; died 15 March 1924.
391. Elpha Imogene Turney, born 15 March 1924; died 20 March 1924.
392. Otha C. Taylor, born 1878; died 1962.
393. Joe Ramsey Taylor, born 1919; died 1920.
394. R
395. W. T. Rich, born 13 December 1852; died 1 May 1858.
396. Mahalie V. King, born 1 May 1905; died .
397. Oral King, born 2 January 1896; died 1 February 1930.
398. Alice King, born 9 October 1863; died 8 February 1930.
399. Ida Roberts, born 1888; died 1969.
400. Callie Roberts, born 1878; died 1943.
401. Robert Roy Hamilton, born 9 April 1896; died 5 September 1964.
402. Fairy Mai K. Hamilton, born 23 October 1896; died .
403. Mary Lou Hamilton, born 14 May 1933; died 14 May 1933.
404. Emmer Turney, born 1860; died .
405. John A. Turney, born 1854; died 1943.
406. Larah Turney Mayo, born 9 November 1890; died 19 December 1968.
407. Ira Truitt Young, born 29 August 1895; died 13 September 1960. Tennessee, Private, Company G, 329th Infantry, World War I.
408. Dr. W. F. Young, born 9 July 1862; died 27 January 1935.
409. Menda Young, born 13 February 1870; died 5 September 1907.
410. Emma Young, born 28 October 1896; died 9 November 1896. Daughter of W. F. Young and Menda Young.
411. John A. Rawden Rich, born 1902; died 1924.
412. Ellis Rich, born 6 September 1904; died 14 August 1905.
413. Infant Rich, born 7 September 1880; died 7 September 1880.
414. M. L. Ormand Rich, born 7 March 1858; died 22 September 1880. Age 22 years, 6 months, 15 days.
415. Grave.
416. Maud Rich, born 15 December 1875; died 16 December 1889.
417. June Resa Bogle, born 16 June 1958; died 28 August 1960.
418. Lytle Gene Murphy, born 1937; died 1945.
419. Beulah King Melton, born 7 May 1891; died 23 June 1934.
420. T. J. Melton, born 13 April 1884; died 15 April 1960.
421. Johnny E. Melton, born 9 April 1911; died 4 January 1974.
422. Elvis Harvey, born 1903; died 1955.
423. T. C. Hutchinson, born 1863; died 1939.
424. Susie Hutchinson, born 1875; died 1925.
425. Ray Keaton, born 1896; died 1955.
426. Arthur Keaton, born 1895; died .
427. W. Bransford Cooper, born 3 May 1875; died 17 April 1940.
428. Claude Cooper, born 16 September 1904; died 3 April 1920.
429. Cooper, born 20 January 1875; died 24 May 1960.
430. Thomas J. Ford, M.D., born 1876; died 1928. Age 52 years.
431. James C. Ford, born 19 September 1835; died 4 June 1911.
432. Nancy C. Ford, born 2 July 1843; died 29 April 1915.
433. H. E. McAdoo, born 17 November 1846; died 13 December 1907.
434. Grave.
435. Mollie McAdoo, born 28 March 1873; died 21 September 1876. Daughter of W. E. McAdoo and D. F. McAdoo.
436. Grave.
437. S. A. Warren, born 17 August 1856; died .
438. Tennie Warren, born 15 December 1861; died .
439. M. T. Warren, born 17 July 1879; died 17 July 1879.
440. M. T. W.
441. S. S. W.
442. William Robert Murphy, born 14 October 1947; died 17 October 1947.
443. Nettie Martin Murphy, born 8 June 1889; died 8 September 1966.
444. Robert Ferrell Murphy, born 28 February 1891; died 1 April 1955.
445. Sara Turner, born 12 June 1853; died .
446. Leeander Turner, born 16 December 1858; died 21 August 1898.
447. Dovie Turner, born 9 February 1890; died 19 January 1946. Wife of Cecil Turner.
448. Elsie Turner, born 9 April 1894; died 8 July 1923. Wife of Cecil Turner.
449. Cecil Turner, born 18 March 1882; died 12 September 1959.

450. Lela Luttrell Turner, born 11 October 1888; died 12 November 1920. Wife of M. C. Turner.
451. Nancy King, born 16 September 1876; died 15 August 1950.
452. Lester King, born 13 March 1868; died .
453. Keaton Grave.
454. Keaton Grave.
455. Keaton Grave.
456. Keaton Grave.
457. Ann Mullinax, born 23 February 1907. Age 30 years.
458. Alta Mullinax, born 30 March 1870; died 7 March 1891.
459. L. B. Mullinax, born 18 September 1873; died 22 August 1900.
460. Jerry Mullinax, born 4 March 1841; died 24 September 1908.
461. Amanda J. Mullinax, born 8 August 1844; died 11 February 1910.
462. Infant Hays, born 14 July 1906; died 15 October 1907. Son of G. A. Hays and May Hays.
463. Nancy George Jennings, born 1874; died 1950.
464. Willie Dayton George, born 30 August 1892; died 5 April 1946.
465. Ada Blythe, born 1882; died 1950.
466. Meedy Victoria Harvey, born 3 March 1881; died 15 June 1938.
467. Artie Anderson, born 1889; died 1956.
468. F. S. Anderson, born 1857; died 1924.
469. Mattie Turney Anderson, born 1862; died 1944.
470. Almirah Armstrong, born 1865; died 1942.
471. William C. Sullivan, born 27 October 1857; died 19 September 1920.
472. Temperance Gertrude Sullivan, born 22 July 1871; died 28 July 1921.
473. Mary Mabe, born 14 June 1846; died 23 April 1912.
474. John Mabe, born 26 November 1847; died 4 July 1925.
475. Victoria Mabe, born 1876; died 1955.
476. Elige Mabe, born 1873; died 1946.
477. Ernest Keaton, born 1874; died 1947.
478. Sallie Hawkins Keaton, born 1877; died 1902.
479. Annie Brewer Keaton, born 1874; died 1959.
480. Lucille Keaton, born 1869; died 1944.
481. George Groom, born 1869; died 1944.
482. W. A. Groom, born 19 May 1827; died 9 March 1885. Age 57 years, 9 months, 20 days.
483. Sarah E. Groom, born 9 December 1832; died 9 June 1888. Age 55 years, 6 months. Wife of W. A. Groom.
484. Claudius C. Groom, born 14 July 1865; died 11 August 1865. Son of W. A. Groom and Sarah E. Groom.
485. Leona Smith Hays, born 1916; died .
486. Ernest Hays, born 1920; died 1975.
487. Jessie Hays, born 29 August 1890; died 24 January 1963.
488. Valta Hays, born 26 August 1888; died 14 February 1973. Tenn., Corporal Battery E, 317th Field Artillery.
489. Lanis Jennings, born 1874; died 1957.
490. Ophelia Jennings, born 1878; died 1963.
491. Infant Jennings, born 15 December 1901; died 15 December 1901. Son of J. L. Jennings and Ophelia Jennings.
492. Bessie Hays Armstrong, born 1906; died 1969.
493. Wanda Joy Armstrong, born 1934; died 1934.
494. John B. Reeves, born 25 April 1860; died 4 January 1938.
495. Malisa J. Reeves, born 29 September 1857; died 19 June 1912. Wife of J. B. Reeves.
496. Era Mai Thompson, born 23 September 1890; died 8 June 1926.
497. Brandon.
498. George A. Rich, born 15 July 1807; died 8 November 1886. Age 79 years, 8 months, 23 days.
499. Lowlenda Rich, born 1 June 1814; died 9 July 1891. Age 77 years, 1 month, 9 days. Wife of G. A. Rich.
500. Sarah E. Derrickson, born 8 October 1872; died 3 May 1968.
501. Lockie Adaline Rich, born 16 June 1847; died 22 August 1869.
502. Julia Ann Rich, born 19 October 1839; died 12 February 1890.
503. Josephine Hays, born 24 March 1850; died 15 April 1935.
504. J. M. Hays, born 8 July 1854; died 9 August 1936.
505. O. B. Hays, born 21 October 1854; died 11 September 1896. Wife of J. M. Hays.
506. Early Luster Hays, born 8 August 1877; died 17 September 1878. Age 1 years, 1 month, 9 days.
507. Charley Hays, born 3 May 1886; died 16 August 1888. Age 2 years, 3 months, 13 days.
508. Hardie Thomas, born 1881; died 1968.
509. Tennie Thomas, born 1882; died 1935.
510. S. T. Anderson, born 1897; died 1957.
511. Joe Armstrong, born 25 October 1864; died .
512. Permelia McMillen Armstrong, born 7 September 1867; died 12 July 1921.
513. C. T. Turney, born 14 February 1876; died 15 December 1928.
514. Georgia Turney, born 28 November 1884; died 10 January 1921. Wife of C. T. Turney.
515. Grave, born 2 July 1912; died 13 October 1912.
516. Lanna Louise Turney, born 1912; died 1912.
517. Mollie Truitt, born 12 February 1886; died 25 July 1904. Wife of W. E. Truitt.
518. Berly Truit, born 5 July 1904; died 6 September 1904.
519. Grave.
520. Grave.
521. John Henry Hays, born 19 February 1882; died 29 September 1929.

522. Martin Harris, born 1894; died 1955.
523. Bettye Hancock Harris, born 1901; died 1947.
524. Eliza Hayes, born 1878; died 1948.
525. Joe Hayes, born 1866; died 1934.
526. Frank J. Hadley, born 8 July 1915; died .
527. Emie J. Hadley, born 30 August 1904; died .
528. Arlena Dunn, born 14 April 1889; died 14 September 1963.
529. Andrew Dunn, born 17 January 1890; died 12 September 1955.
530. Bessie Groom Armstrong, born 22 July 1891; died 11 January 1974.
531. Cecil E. Armstrong, born 12 February 1888; died 4 February 1972.
532. Norene Turney Jennings, born 1908; died 1952.
533. John W. Robertson, born 1934; died 1934.
534. Annie Nichols Vance, born 4 December 1898; died 12 November 1973.
535. Elmer Vance, born 10 May 1895; died 18 November 1969.
536. Elisabeth Paty, born 14 September 1832; died 10 February 1892. Wife of Jesse Paty.
537. Jesse Paty, born 25 September 1829; died 8 July 1887.
538. Drusilla T. Paty, born 10 November 1834; died 14 May 1865. Wife of Jesse Paty.
539. Helen A. Fite, born 2 April 1854; died 2 February 1872.
540. Helen A. Fite, born 10 January 1872; died 28 March 1872.
541. Grave, died 22 February 1875. Age 10 years, 21 days.
542. Unity E. Paty, born 7 December 1855; died 22 May 1876.
543. Eula H. Nichols, born 15 September 1871; died 13 February 1902.
544. Bertha Mai Bly, born 10 December 1934; died 11 December 1934.
545. Arthur L. Bly, born 26 February 2901; died .
546. Clidie T. Bly, born 9 July 1902; died 20 October 1976.
547. Nelda Ruth Corley, born 4 August 1935; died 6 August 1936.
548. Cirg Corley, born 3 June 1891; died .
549. Willie Mai Corley, born 18 May 1898; died 8 August 1924.
550. Mattie May Fite, born 1871; died 1934.
551. Joe Fite, born 1867; died 1962.
552. J. B. Taylor, born 23 May 1856; died 9 December 1912.
553. Horace B. Taylor, born 2 July 1899; died 18 July 1922.
554. Mamye McCrary Taylor, born 27 December 1898; died .
555. Fannie A. Turner, born 1874; died 1966.
556. James W. Turner, born 1865; died 1952.
557. William Gaylon Turner, born 26 February 1901; died 20 March 1902. Son of J. W. Turner.
558. Charley Paty, born 26 March 1836; died 28 April 1890. Age 54 years, 1 month, 2 days.
559. William Paty, born 29 May 1858; died 30 October 1889. Age 31 years, 5 months, 1 day.
560. Thomas W. Rich, born 14 June 1833; died 19 April 1865. Age 31 years, 10 months, 5 days.
561. Matthew Wilson, born 11 February 1802; died 10 September 1882. Age 79 years, 6 months, 29 days.
562. Polly Wilson, born 15 July 1813; died 9 February 1892. Age 78 years, 6 months, 21 days.
563. Grave.
564. J. W. Wilson, born 27 March 1849; died 14 March 1920.
565. Elmer Lee Hutchinson, born 24 October 1920; died 6 May 1947.
566. James H. Holdsworth, born 5 September 1887; died 17 December 1957.
567. Winnie R. Holdsworth, born 5 April 1890; died 30 September 1973.
568. Lillie L. Barrett, born August 1858; died 15 March 1951.
569. George A. Holdsworth, born 16 March 1916; died 6 June 1944. Tenn., Sgt. 12 Inf., 4th Division.
570. James Horace Holdsworth, born 28 November 1912; died 15 December 1935.
571. Mack C. Corley, born 5 January 1937; died 9 January 1961.
572. Jewell D. Corley, born 5 January 1937; died 16 January 1941.
573. Lucy McIntyre Corley, born 14 April 1859; died 17 May 1927.
574. Nathanael A. Corley, born 2 February 1861; died 4 August 1944.
575. Edna Joe Fite, born 1 January 1922; died 1 January 1922.
576. Jennie Adamson Ford, born 2 February 1872; died 3 July 1914.
577. Joseph C. Ford, born 2 February 1872; died 3 July 1914.
578. W. C. Jennings, born 1839; died .
579. America F. Jennings, born 1841; died 1915.
580. George K. Smith, born 26 June 1893; died .
581. Mildred E. Smith, born 18 August 1896; died 29 October 1972.
582. Don E. Rich, born 11 December 1862; died 10 December 1929.
583. Fairrie Rich, born 4 May 1874; died 28 January 1952.
584. Grave.
585. Grave.
586. W. F. Rich, born 4 August 1809; died 9 February 1891.
587. Grave.
588. Mattie Rich Fite, born 26 January 1866; died 25

- November 1901. Wife of E. D. Fite.
589. E. D. Fite, born 27 September 1865; died .
590. N. E. Turney, born 8 October 1869; died 31 October 1894.
591. N. P. Turney, born 12 July 1895; died .
592. Irene Griffin, born 6 September 1910; died 14 April 1964.
593. Elbert Griffin, born 1 November 1913; died 11 April 1955.
594. Viola Dunn, born 1893; died .
595. Elbert Dunn, born 1887; died 1948.
596. Joe F. Holdsworth, born 28 July 1921; died 5 September 1960. Tenn., M. Sgt., Tank Company 14, Armed Cavalry, World War II, Korea B. S. M.
597. Maggie Jennings, born 8 September 1898; died 15 August 1959.
598. Edna Jennings, born 16 September 1884; died 20 October 1921.
599. M. J.
600. J. M. Truitt, born 5 October 1868; died 12 December 1956.
601. Nannie Truitt, born 25 February 1872; died 19 April 1933.
602. James B. Truitt, born 12 July 1909; died 10 July 1911. Age 1 year, 11 months, 28 days. Son of J. M. Truitt.
603. J. H. Walden, born 7 May 1862; died 2 April 1913.
604. Bernice B. Walden, born 31 January 1896; died 19 March 1974.
605. Gertrude Hayes Walden, born 28 May 1896; died .
606. Leatha Patton, born 1870; died .
607. J. L. Patton, born 1870; died 1935.
608. R. D. Sneed, born 1873; died 1937.
609. J. M. Sneed, born 18 February 1910; died 10 January 1910 (sic).
610. Grave.
611. Grave.
612. Mollie A. Sneed, born 1858; died 1933.
613. George B. Sneed, born 1850; died 1932.
614. Frank Loy Truitt, born 20 March 1893; died .
615. Loraine Anderson Truitt, born 7 October 1894; died 27 June 1977.
616. William Harold Truitt, born 26 October 1927; died .
617. Dorothy Crook Truitt, born 30 December 1925; died .
618. Bonnie R. Bell, born 10 February 1901; died 18 May 1976.
619. Willie H. Bell, born 27 November 1899; died .
620. Elba J. Groom, born 1901; died 1958.
621. Hazel D. Groom, born 1914; died .
622. Ida J. Groom, born 1 April 1872; died 24 April 1930.
623. K. W. G. Groom, born 29 February 1868; died 18 June 1942. [Note: "K. W. G." has been marked through, and "R. W." placed above the name by another hand.]
624. T. J. G.
625. R. M. Johnson, born 15 December 1842; died 21 November 1917.
626. Jane McMillin Johnson, born 17 March 1856; died 25 October 1921.
627. R. M. J.
628. John C. Johnson, born 20 December 1816; died 23 April 1891. Age 77 years, 4 months, 3 days.
629. Malissa Johnson, born 24 June 1833; died 30 September 1904. Wife of J. C. Johnson.
630. Ulysses P. Johnson, born 13 July 1870; died 9 February 1871.
631. Cynthia E. Johnson, born 13 November 1846; died 5 December 1871. Age 25 years, 22 days. Wife of B. M. Johnson.
632. Martha E. Johnson, born 11 May 1870; died 16 January 1872. Daughter of M. J. Johnson and J. C. Johnson.
633. Mattie F. David, born 10 July 1873; died 13 August 1873. Daughter of A. C. David.
634. L. E. Turney, born 17 June 1875; died 20 June 1875. Daughter of I. C. Turney and N. F. Turney.
635. Henry Clay Johnson, born 25 March 1876; died 11 September 1876. Son of J. C. Johnson.
636. Turney, born 24 May 1856; died 1 August 1883.
637. J. A. Turney, born 26 July 1882; died 14 June 1883. Son of I. G. Turney.
638. J. A. T.
639. N. E. Johnson Turney, born 24 May 1856; died 1 August 1883. Wife of I. G. Turney.
640. Susan Jane Turney, born 30 April 1821; died 16 September 1890.
641. I G. Turney, born 22 March 1852; died 14 October 1926.
642. James W. Stephens, born 4 January 1909; died .
643. Carmine C. Stephens, born 5 December 1911; died .
644. Mary J. David, born 20 May 1849; died 15 September 1905. Wife of H. C. David.
645. Bonnie C. David, born 8 November 1880; died 4 May 1890. Daughter of H. C. David and Mary J. David.
646. Grave.
647. Viola Knight, born 21 June 1867; died 2 December 1883. Wife of J. M. Knight.
648. Clere Johnson, born 1 March 1885; died 7 December 1890. Age 4 years, 9 months, 6 days.
649. Grave.
650. J. M. Johnson, born 22 May 1865; died 1891.
651. Emily F. Johnson, born 11 September 1851; died 10 December 1893. Wife of T. K. David.
652. Viola E. Johnson, born 2 January 1891; died 30 December 1893. Age 2 years, 11 months, 9 days.
653. Frank Judson truitt, born 23 August 1920; died 5 April 1973.
654. Anita Fite Truitt, born 21 June 1917; died .

655. Rebecca J. George, born 1869; died 1959.
656. J. W. George, born 1865; died 1936.
657. Moniest Cooper Allison, born 1899; died .
658. R. W. Allison, born 11 November 1926; died 13 November 1926.
659. Brilla Fite, born 1879; died 1935.
660. Ernest Fite, born 1876; died 1971.
661. Josephene Dunn, born 24 November 1863; died 30 October 1945.
662. Thomas Jefferson Dunn, born 1 July 1860; died 17 December 1951.
663. Early Jennings, born 5 June 1895; died 10 March 1960.
664. Neil, born 26 September 1933; died .
665. Wesley Clay Jennings, born 7 October 1844; died 28 August 1912.
666. Mary Ann Jennings, born 19 March 1846; died 12 August 1928.
667. John C. Coble, born 2 August 1809; died 18 July 1889. Age 79 years, 11 months, 16 days.
668. Charity Coble, born 16 March 1809; died . Age 32 years, 6 months, 22 days.
669. G. E. J.
670. J. C. C.
671. Sinthia E. Fite. Wife of John A. Fite. [Note: See see next entry.]
672. Sinthia E. Fite, born 8 May 1851; died 12 September 1886. Wife of John A. Fite.
673. Mary A. Fite, born 21 July 1866; died 11 March 1891. Wife of John A. Fite.
674. Mary A. Fite. Wife of John A. Fite. [Note: See above entry.]
675. Infant Robinson, born 12 September 1906; died 14 November 1906. Daughter of Charles Robinson.
676. Charles K. Robinson, born 16 June 1874; died 16 May 1921.
677. Lillian Fite Robinson, born 13 October 1873; died 18 January 1961.
678. Eugenia Robinson, born 10 April 1914; died 3 June 1948.
679. Malisie Rollins, born 20 July 1872; died 11 April 1888. Daughter of Obediah Rollins and Susan Rollins.
680. Willie Rollins, born 6 June 1876; died 6 December 1908. Age 32 years, 5 months.
681. Mary Emline Hale, born 22 December 1895; died .
682. Ray Donnell Murphy, born 3 June 1938; died 11 April 1959.
683. Estell Murphy, born 1916; died .
684. K. C. Murphy, born 1912; died 1951.
685. Gaynell George, born 9 June 1911; died 9 December 1974.
686. Adren George, born 28 November 1908; died .
687. Ernest Davis, born 27 January 1912; died 16 June 1976.
688. Carmine Davis, born 8 July 1919; died .
689. Kenneth Neal Fite, born 16 February 1945; died 17 February 1945.
690. C. Angie Dunn, born 1900; died 1925.
691. McPherson.
692. Mildred Groom, born 1910; died .
693. Wesley Groom, born 1907; died 1960.
694. William Groom.
695. Larry Groom.
696. Nancy A. Jennings, born 1 September 1819; died 3 February 1900. Age 80 years, 5 months, 2 days.
697. Christine Fite, born 1919; died 1919.
698. A. L. Fite, born 1875; died 1955.
699. Annie Fite, born 1881; died 1919.
700. Infant Robinson, born 12 September 1906; died 14 November 1906.
701. Paula Jean Henley, born 30 August 1948; died 4 January 1949.
702. Jim J. Anderson, born 1904; died 1973.
703. Annette Anderson, born 1908; died .
704. Thatis T. Harden, born 12 August 1894; died 22 January 1974.
705. Johnnie George Harden, born 11 April 1899; died 3 March 1974.
706. Pattie E. Fletcher, born 26 November 1908; died .
707. Hardin F. Fletcher, born 31 October 1900; died 16 October 1971.
708. Wauford H. Groom, born 1914; died .
709. Ina Inez Groom, born 1918; died 1971.
710. A. Ethelyne Dockery, born 18 June 1911; died .
711. S. Harvie Dockery, born 5 December 1907; died 27 January 1971.
712. John Lofton King, born 18 December 1914; died 11 July 1970.
713. Ruth Martin King, born 25 July 1921; died .
714. Phillip Layne Smith, born 19 October 1947; died 9 July 1972. Tenn., Pfc., U. S. Army, Vietnam.
715. Robert T. Sadler, born 6 March 1897; died 27 March 1971.
716. Paul Crook, born 13 April 1914; died 10 May 1969.
717. Ethel Crook, born 20 May 1920; died .



## QUERIES

*Notice: It is very important that your name and address be placed on the same sheet as the query. Please check for correct spelling and legibility of names, particularly surnames when handwritten. Names will be shown in queries as best as can be determined which may not be what you intended. Where the correct surname spelling cannot be confirmed, use the one you prefer first with optional spelling in parentheses. B.E.*

**OLIVER/HILLHOUSE:** I would like to find the birth & death dates of John Franklin OLIVER from Lawrence Co TN. He m Alice O. WILLIAMS (dau of William F. WILLIAMS & Martha J. FOUST) on 18 Jun 1893. He was possibly an orphan who lived with Will RICHARDSON in Appleton & he died in 1899 before his son, John, was born. Other children were Ader, Sadie & Perry. I would like to correspond with anyone working on the HILLHOUSE line. Gloria Hillhouse Oliver/3102/Chimney Rock, Nacogdoches TX 75961.

**CARTER/ROANE:** Seeking info abt siblings & parents of my gr- gr-grandfather William W. CARTER (b 4 Jul 1798 Culpeper Co VA, d 25 Dec 1877 Wilson Co TN) who m Isabella ROANE (b 15 Feb 1810 Wilson Co TN, d 4 Apr 1883 Wilson Co TN) 20 Nov 1828 in Wilson Co TN. Two of their 8 children were Samuel A. (b 1832 Wilson Co TN) & my gr-grandfather Henry Clay (b 1843 Wilson Co TN). Isabella was dau of Hugh ROANE & Hannah CALHOUN. We would appreciate knowing if you have any info which could be copied for us abt William CARTER & son Henry. If so, please let us know the cost. Jon C. Stine/2019 Siesta Lane/Orlando FL 32804/(407)293-9355.

**HUDDLESTON/PATE/JONES:** Early settler to Smith Co TN was Henry HUDDLESTON (b bef 1775, d ca 1826). First wife was Martha PATE (m 1790 VA). Second wife was Martha (name unk) who later m Leonard JONES of Smith Co TN. What was maiden name of second wife of Henry HUDDLESTON? Gene Talley/3846 Thistle Knoll Cove/Bartlett TN 38135.

**SCOTT/EXXUM:** John T. SCOTT (b ca 1794 VA, d aft 1860 Perry Co TN) m first Rebecca EXXUM 1818 in Davidson Co TN. Resided Davidson Co prior to moving to Humphries Co TN in early 1840s..then to Perry Co TN prior to 1860. Suspect his parents were William SCOTT Jr whose widow Mary moved to Humphries Co TN also after 1830. Who were the parents of John T. SCOTT? Gene Talley/3846 Thistle Knoll Cove/Bartlett TN 38135.

**HOLLOMON/DUNEVANT:** I am trying to find anything on Joseph W. HOLLOMON & Mary J. DUNEVANT who married in Lauderdale Co TN in 1844. I think they were in Jackson Co TN before this. Mrs N. L. Huffman/612 Shenandoah Dr/Brentwood TN 37027.

**CARMACK/LAMB:** Alexander LAMB (b 7 Oct 1782 PA) m Elizabeth CARMACK (b 17 Dec 1779 VA) 19 Aug 1801. Who were their parents? 1st m child: Hugh LAMB (b 13 May 1805) m Elizabeth Ann ANDERSON 30 Dec 1827 in Bledsoe Co TN. 2nd m child: Cornelius LAMB (b 18 Jan 1812, d Jan 1870). Was Hugh LAMB, on 1902 Smith Co TN Tax List, the father of Alexander LAMB? Could either of the Cornelius CARMACK's from Overton Co TN have been father to Elizabeth CARMACK? Adam LAMB (b 1785 PA) living in Bledsoe Co TN was probably brother of Alexander LAMB. James Grayson McCain/312 Seven Oaks Trail/Knoxville TN 37922/ (615)539-0426.

**ARMSTRONG/KNOX/ELLIS:** Looking for others researching the ARMSTRONG & KNOX families. These families came from Rowan Co NC to Sumner, Wison, & Rutherford Counties TN in the late 1700/early 1800's. Related surnames include GILLISPIE & BRANDON. Would also like to exchange information with others researching ELLIS families in Sumner & Wilson Co's in TN. Ann Hall McGuffey/1805 Taylor/Cedar Hill TX 75104.

**WINN/ROSE/GREEN/WILKS:** I am looking for information on my family who lived in Robertson Co TN. Especially those around the Cedar Hill District. Looking for William J. WINN, Marcus L. WINN, Reuben ROSE, Elias ROSE, Robert GREEN & Richard WILKS. I would appreciate any information on these men. Carl J. Lynch Jr/PO Box 712/Rogers AR 72757.

**WELLS/MAYBARY:** Thomas Hutchinson WELLS (b ca 1792 SC, d 20 Nov 1865 Randolph Co AR) m Barbara MAYBARY (b ca 1795 VA, d 1860-65) ca 1815, prob in TN. According to "Goodspeed's History of NE Arkansas", they were "both taken to Davidson Co TN by their parents when young, and there they grew to maturity and married." Thomas H. WELLS was in the 4th Reg. of Tenn Militia., War of 1812, enlisting at Franklin Williamson Co., 10 Mar 1814. They lived briefly in Washington Co MO ca 1820-1821 & moved to Arkansas ca 1825. Barbara may have belonged to the MAYBERRY family of Hickman Co. Would like to correspond with anyone interested in this couple. Carol T. York/41 Four Winds Dr/Middletown NJ 07748.

**LASATER/TURNER:** I am seeking info about my great-grandparents: Jacob Bell LASATER (b ca 1865 near Rutherford Co) & Sarah Elizabeth "Sallie" TURNER (LASATER)(b ca 1865 near Wilson Co). My grandmother, Mary Elizabeth "Lizzie" LASATER (TIDWELL)(BAILEY), (b 18 Dec 1887) was their daughter. I would appreciate any info on the above people. Vickie Neal Southard/400 S. Vermont, Ste 110/Oklahoma City OK 73108/(405)640-7653/fax (405)381-4969.

**LINDSEY/MILLER:** Seeking parents of Wyatt LINDSEY (d 1822 Wilson Co TN). His wife was Betsy MILLER, dau of John MILLER (d 1841 Sumner Co TN) & wife Sarah. Who are the parents of John & Sarah? Is Ezekiel LINDSEY related? Other related names are STARRETT/STERRETT, SWAN, CAPLINGER & WITHERSPOON. Seek correspondence with anyone researching these families. Margie Garr/1505 Mistletoe/Mountain Home AR /(501)425-0405.

**FREEMAN:** I am seeking info on Dr Robert Moody FREEMAN (B 12 Jul 1812 Canada/West -now Ontario) who m Mary Amanda NOLEN 18 Oct 1853 in Williamson Co. He was a dentist, died 18 Oct 1869 & is buried in Mt Olivet cemetery. He appears on the 1860 census but not before. Had the following children: Fannie B.; Cora; Robert; William P.; Nannie; M. Anna. It is known that Mary Amanda NOLEN's siblings married into the HYDE, STEPHENS, CARTER & SCOTT families. Beatrice P. Freeman/6666 Brookmont Terrace/Nashville TN 37205/(615)356-2235.

**BRECHEN/BRACKEEN/BRACKEN/BRACKIN:** Seeking info on this family name. Records indicate migration began in DE moving thru PA, VA, NC, TN, then to MO & TX. BRACKEEN also in AL. I am especially looking for info on Josiah (b 1795) who m (1) 1815 Sarah (Sally) LOGAN which is confirmed (2) bef 1850 Tennessee WALKER, not conf. & (3) Agnes HOUSTON, confirmed. 1840 census confirms he was in TN, but no records. Would like to correspond, exchange &/or share info. I will be glad to pay copy & postage cost. Duane E. Brecheen/44125 Villeta Dr/La Quinta CA 92253/(619)360-1328.

**BOND:** Seeking parents & other family members of Michael BOND (b 15 Jul 1809 Bedford Co). Family moved to Wilson Co in 1811. He m Elizabeth KING 21 Feb 1828 in Wilson Co, moved to Jefferson Co IL in 1830. Was the father's name Lewis BOND or possibly John? Barbara Benedict/1225 Canyon Hills Rd #15/Thermopolis WY 82443/(307)864-5485.

**GAMBLE:** Need info on Patrick Kinchen GAMBLE (b 1794 NC) served as Pvt in Capt Andrew McCARTNEY's Company, Tennessee Militia, 1st Regiment in 1814. He later lived in Blount Co AL. Who were his parents?

Anne M. Steverson/1101 North Nashville Ave/Sheffield AL 35660.

**MILLS:** Seeking info about Richard MILLS (b 1795) & Margaret WHENERY MILLS (b 1794) & their children, specifically Eli (b 17 Apr 1825). Richard & Margaret were m 28 Sep 1814 in Greene Co TN. They moved to Overton Co TN prob after 1830 & died there after 1860. Nancy Crabbe/301 Compass Ave/Beachwood NJ 08722/(908)349-6642.

**LEATH:** Need parents of Peter LEATH (b 1768 VA, d 1840 Wilson Co TN) & wife Elizabeth (b 1778 GA, d 1865 Wilson Co TN). Ch: Wm. E. m Aline FIELDS; Nancy m Ira BARBER; Marcus H. m Mary BARBER; Sarah m Wm. R. LANNOM; Harriet m Robert S. RICKETTS; Peterson Goodwin m Selina Harriet LANNOM; John A. m Frances GIBSON. Mary Louise Gossum/201 Court Dr/Fulton KY 42041.

**CRUTCHFIELD/BURNETT:** Oliver M. CRUTCHFIELD m Mary/Polly BURNETT in Davidson Co TN 18 Dec 1818. Was he the son of John CRUTCHFIELD, a brother to Elisha CRUTCHFIELD who m Permelia WALDEN in Rutherford Co TN & a grandson of Samuel CRUTCHFIELD (d 1795 Warren Co NC) & Sarah (Shearin) CRUTCHFIELD (d 1826 Rutherford Co TN)? . Mary Louise Gossum/201 Court Dr/Fulton KY 42041.

**HINES:** Please contact me if you are interested in participating in an information exchanging meeting in Middle TN on the HINES family. The meeting would primarily focus on 19th Century lines in Maury & surrounding counties. Tommy Hines/700 Kendall Dr/Vestavia Hills AL 35226/(205)823-0111.

**GARRETT/GARRED/GARROT:** Seeking info on William GARRETT (b 1792 GA) m Elleanor LEWALLEN (b 1806 NC). Ch: Cynthia E. m Daniel D. C. WOOD 27 May 1847 Maury Co TN; Francis C. 23, m to Jane in 1850 Maury Co TN census, but in 1860 Independence Co AR census she is not listed; Hulda J. (b 1830); John (b 1832); Mary E. (b 1834); William L.L. (b 1836) m Adah RODGERS 16 Jan 1861; Lafayette (b 1837); James (b 1838) m Emiline LAWED 22 Dec 1862; Issac (b 1841) & Edward (b 1842). Will share & pay for copies & postage. Marian Wood Hilton/Rt 1, Box 556/Fordland MO 65652-9452/(417)767-2935.

**WOOD/WOODS:** Seeking info on my grand parents Daniel D. C. WOOD (b 1822 AL) & Cynthia E. GARRETT who m 27 May 1847. He was in Confederate service. He was a pvt in Co C, 17th Reg AR, under Col John GRIFFITH, & Capt Josephua DOTSON. He evidently survived the war but wife is listed on 1880 in Ind. Co with son James & bro Francis. Ch: William C, (b 1848 TN) m Virginia MASH 6 Feb 1870 Ind. Co; Hiram John (b

1854) m Amanda Jane SHARP 19 Jun 1883 (my grandparents); Nancy (b 1856) m J. F. TURNER 25 Nov 1874; James F. (b 18 Feb 1867) m Sarah E. 16 Feb 1893. Will share & pay for copies & postage. Marian Wood Hilton/Rt 1, Box 556/Fordland MO 65652-9452/(417)767-2935.

**SCHAUSS/NULL:** In "FLOWERING of the CUMBERLAND" by Harriette S. Arnow, 1963, a quote from the Tenn. Gazette of 28 Nov 1804, speaks abt a business (pottery) called SCHAUSS & NULL near Nashville in 1799. I am seeking info on this business & the SCHAUSS &/or NULL who gave it its name. Johannes SCHAUSS/John SHOUSE (b 8 Dec 1769 NC) to Philip & Maria Catherine (nee BECK) SCHAUSS, son of the immigrant Johann Adam SCHAUSS, who entered the port of Phila. 1 Sep 1736. Philip came to NC by 1755. Johannes m Catharina NOLL/NULL 27 Mar 1792 & had son Jacob (b 8 Aug 1793). Catharina d 19 May 1795 & within 1-2 yrs Johannes had given care of Jacob to his sister Susanna S. KRIEGER, sold his property in Germantown & moved "west". There is good reason to believe he is involved with the above company & is the same John SHOUSE who m Sallie COLLINS 4 May 1801 in Davidson Co TN. His sister Catharina, m John NOLL, (first wife's brother), & it is possible he or a brother is the "NULL" in the company. An 1820 letter to Jacob from his father, John SHOUSE, sent from Alton IL to NC speaks of Jacob's other brothers, John (age 17 & in IL) & Henry (age 14 & in KY) & the fact that the father is still in the "potting business". Nelson A. L. Weller/2940 Wesleyan Lane/Winston-Salem NC 27106.

**JETTON/WILSON:** Seeking info on family of Samuel WILSON of NC (d ca 1827-1830 Rutherford Co TN) named by Goodspeed as having planted first corn on Stones River. Dau Nancy WILSON m 9 Jan 1805 to Robert Brevard JETTON of NC (1757-1840). Any info on WILSON or JETTON families appreciated. Catherine T. Turnley/P.O. Box 22002/Nashville TN 37202-2002.

**BATEY:** I would like to share info or correspond with anyone working on the BATEY family of Rutherford Co TN. I am particularly interested in William Ferington BATEY, my gr-gr-gr-gr-grandfather. According to a Civil War veterans questionnaire filled out by his son Benjamin Blanks BATEY in 1912, William was born in 1775 at Brunswick C. H. (Court House?) Brunswick Co VA. He m Elizabeth Parham SILLS in Rutherford Co TN on 15 Nov 1815. They had the following children: George W, Martha Jane, Mary G., Robert W., Evaline G., Henry Holmes, & Benjamin Blanks. Elizabeth P. (SILLS) BATEY d in Oct 1838, two weeks after the birth of son Benjamin Blanks. William F. BATEY d Dec 1850. I am willing to exchange info on this family, & will pay for postage & copying, if necessary. Andrew Baker/11800 Bell Ave/Austin TX 78759.

**DAVIS:** My gr-grandfather George Washington DAVIS (b 16 Feb 1826 TN)(known as Wash, Washington, & G. W.) m Jane LAWSON ca 1851/52. They had a dau Mary (b 22 Mar 1852 TN). Before Dec 1859, Wash DAVIS divorced Jane. Jane remarried a John PERKEY or PARKEY & had at least another dau by him. They may have later moved to KS, but lived first in TN. By 1860 George W. DAVIS was living in Christian Co MO. In dau's obituary, it gave Mary's birth place as "Jerome" Co TN, which never existed as a county. I need the following: George W. DAVIS' parents, place of birth, place of marriage; Mary M. DAVIS' birthplace; towns, townships, areas, etc that carried the name "Jerome" in the 1850s that Mary could confuse with a county. I would like to correspond with anyone with info on the above. Edward L. Davis/1025 S. Fort Apt #8/Springfield MO 65807.

**ARMSTRONG/LAPSLEY:** William ARMSTRONG (b 10 May 1737 PA, d 20 Jun 1788 Williamson Co TN). A Capt in the Revolution. He m Jane LAPSLEY 16 Jan 1765. Their son Thomas ARMSTRONG (b 5 Mar 1767, d 3 Apr 1835). These ARMSTRONGs were from the Orange Co NC ARMSTRONGs. Buckley DONALDSON from Orange (Person, Caswell) Co NC came to Williamson Co TN where he m Dida Mira ARMSTRONG 1809. Need info on her parents. Iona Marbry/Rt 1 Box 296/Como MS 38619.

**MURLEY:** Would like to contact any descendants of Daniel MURLEY Sr (b Greenbriar Co VA). Daniel Sr son of cornelius MURLEY & wife Autis??AUTIS? DANIEL Jefferson MURLEY (b KY) m in TN to wife Nancy SAVAGE, dau of John Hamilton SAVAGE & Elizabeth SAVAGE. I have other MURLEY info. Would like contact with Carl SAVAGE-Dallas TX-"Savage Book", or with his family. Iona Marbry/Rt 1 Box 296/Como MS 38619.

**NEWTON/LAUGHLIN:** Seeking info re parents of Edna NEWTON (b ca 1800) who m Stith Meade LAUGHLIN in TN (prob Rutherford Co ca 1817). Steith was the son of James LAUGHLIN & Anna YOUNG. Also need info re marriage records for Stith & Edna. They had 3 sons: Newton Carrol, James P. & William B. LAUGHLIN, all born in TN. The family left TN & moved to AR between 1822 & 1830. "Edney" Laughlin was enumerated on the Washington Co AR 1830 census as Head of Household. Edna & the sons later moved to Jasper Co MO & the sons moved to TX ca 1850. Delores L. King/9309 S. Longwood Dr/Granbury TX 76049.

**WITHERSPOON:** Seeking info re the parents of Joseph WITHERSPOON, who resided in Rutherford & Sumner Co TN. In Sumner Co, in 1799, Joseph signed a "Petition to Gen. Assembly". Early records in Rutherford Co include membership in Stones River Presbyterian Church near Murfreesboro. Joseph m Jane BOYD ca 1799. Joseph later moved to Newton Co MO & died there ca

1850. Delores L. King/9309 S. Longwood Dr/Granbury TX 76049.

**MILES/HUDGINS:** I have been working on the MILES & HUDGINS family names & would like to make contact with any researchers in your area that may also be working on these surnames. Thomas MILES & Nanny/Nancy PATTERSON arrived in the area from Caswell Co NC in the late 1700's & another Thomas MILES & wife Elizabeth (I believe) HUDGINS were in the area ca 1823. I have been working on the family in VA & have a substantial amount of data that may be of interest to others. I would also like to have access to the family histories that developed in the area. Ernest N. Miles/6 Frederick Dr/Apalachin NY 13732/(607)625-3447.

**SCUDDER:** Trying to find descendants of sisters Lula & Ada SCUDDER. Lula (b May 1884 KY/TN), m Steven DOUGLAS 14 Jul 1900 Montgomery Co TN. Had sons Robert Hatton (b 1903) & Jasper (b 1907), died young. Robert m Florence & had dau Betty. Lula m #2 Max HILLMAN/HELLMAN. Lived in vicinity of Gary IN when last heard from. Ada (b 25 Aug 1894 Montgomery Co TN) m 1st Samuel CLAY 3 Jul 1909. Believed to have m three more times; W. A. MALLORY, J. I. (Gene) SKLAR, & ?? PETRIE. Lived in Milwaukee WI; Peoria IL & last heard from in St Louis MO in 1937. In 1910 TN census both living with their mother, listed as married, but husbands not in household. Their parents were John Henry & Frances (Frankie) DORITY SCUDDER. Siblings were Agnes Mae, John, Mattie & Harry. Harry died young. Do not know what happened to Mattie or John, either. Agnes was my grandmother & I would really like to know what happened to her family. Mary L. Solomon/2076 Valley View Rd/Joelton TN 37080/(615)876-7779/Fax:(615)876-7501.

**GARDNER:** Seeking any info regarding the parents & siblings of James GARDNER (b 1730's, d 1803 Sumner Co TN) & his wife Mary Ann (maiden name unk)(d 1815 Sumner Co TN) who m before 1764 possibly Mecklenburg Co NC. Their dau Mary GARDNER (b 18 Apr 1764, d 26 Jun 1838 Sumner Co TN) m the Rev. Soldier John SLOAN 27 Apr 1784 in NC. Jim Langford/14171 Rutgers Ave/Orlando FL 32826/(407)249-3628.

**CASSELMAN/CASTLEMAN:** Would like info regarding Benjamin CASSELMAN/CASTLEMAN Sr who m Mary ("Polly") McFARLAND 7 Sep 1809 in Wilson Co TN. Was he the son of Jacob CASTLEMAN, Rev Soldier who d 1804 In Davidson Co TN? Benjamin & "Polly"

CASTLEMAN'S dau Mary Jane m Robert JOHNS 1842 in Wilson Co TN. Jim Langford/14171 Rutgers Ave/Orlando FL 32826/(407)249-3628.

**LATIMER:** I am searching for the parents of Lucinda LATIMER (b 17 Sep 1821 TN, d 9 Dec 1903). She is buried in Old Lake Cemetary in Dover, Pope Co, AR. Lucinda was m 11 May 1841 in Pope Co to David WEST. According to family tradition, at the time of her marriage Lucinda was an orphan, & was living with a family named PERRY in Russellville, Pope Co, AR. Lucinda could not read or write & I have seen her surname spelled many different ways: LATIMER, LATTIMER, LATEMORE, LATERMORE. I have undocumented evidence that Lucinda may be related to the LATIMERs of CT who settled in middle TN in the late 1700s. Melanie Barnett/1129 Pecos Way/Sunnyvale CA 94089.

**FERGUSON/BROGDON:** Searching for parents of Richard FERGUSON (d 1869 Hickman Co TN) & Elizabeth BROGDON (d 1879) who m 26 Dec 1814 Granville Co NC. Ch: Eliza W. m Elijah J. WHEELER; Clarissa W. m Elisha James CRUTCHFIELD; George MERIDITH m Sara Frances COLLINS; Timothy JACKSON m Martha J. (?) & L. A. BREWER. Mary Louise Gosum/201 Court Dr/Fulton KY 42041.

**SHARP:** Seeking info on William SHARP (b 1830 AL) m 1st Nancy L. (b 1831 NC or AL) Ch: Mary E. (b 1852 AL) & John W. (b 1859 AR). Evidently Nancy L. died, & in the 1870 Ind Co census lists Wm. remarried to my Gr-Grandmother Sarah BASTER. Ch of this m: Curtis (b 1862); Amanda Jane (b 21 Mar 1864) m Hiram John WOOD; Geo. J. (b 1867) m Malenda MATLOCK 21 Aug 1893; Emma (b 1870); Sarah E. (b 1868); Nancy L. (b 1869); Frances B. (b 1870); Alace B. (b 1872) Henry H. (b 1877) & Carlene P; (b 1879). In 1880 this SHARP family had moved to Sharpe Co. somewhere around Violet Hill & Sidney. Will share & pay for copies & postage. Marian Wood Hilton/Rt 1, Box 556/Fordland MO 65652-9452/(417)767-2935.

**HAMILTON:** Seeking any info regarding the parents, siblings & descendants of Thomas HAMILTON (b ca 1740 where?) who established Hamilton's Station TN. Was he the father of Anne HAMILTON (b ca 1771 TN) who m King CARR 24 Jan 1789 in Sumner Co TN? Any assistance appreciated. Jim Langford/14171 Rutgers Ave/Orlando FL 32826/(407)249-3628.

- Compiled by Bobby Ezell, Queries Editor



## OF INTEREST

The Historical Publications Section, Division of Archives and History of North Carolina, 109 East Jones Street, Raleigh, NC 27601-2807; phone (919) 733-7442, will send their 1995 catalog free upon request. New titles and those of genealogical interest are noted.

The Southside Virginia Publishing Company announces the twelfth year of publication of *The Southside Virginian*, a quarterly journal of genealogy and history. To subscribe or for more information contact The Southside Virginian, P. O. Box 3684, Richmond, VA 23235.

The 61st annual reunion of the descendants of **William Tubb** (1729-1804) of South Carolina will meet on Saturday, September 2, 1995 at the Senior Citizen's Center in Alexandria, Tennessee. Swap family stories and share a covered dish dinner with your kin from across the country. Dinner begins at noon, but the meeting place will be open by 9:30 a.m. For more information, contact Livy Simpson, P. O. Box 41422, Nashville, TN 37204 or call (615) 297-4151.



### Genealogical Classes/Workshops

The YWCA, 1608 Woodmont Blvd., Nashville, (615) 269-9922, is holding **Beginning Family History Research** classes, MTGS member Carol Gipson, instructor.

Genealogy Friends (Everton Genealogical Workshop), Saturday, October 7, 1995. Contact: Nancy Goodman, P. O. Box 863, Hendersonville, TN 37077. Telephone: (615) 824-2317 (home) or (615) 822-8378 (work)

*Note:* There are a number of classes being taught in the Middle Tennessee area throughout the year, and the *Journal* will be glad to publish schedules if the Editor is in receipt of the details at least three months prior to commencement of classes. Please send notices to the Editor, 200 Sheffield Place, Nashville, TN 37215-3235.

### Conferences

The fourth **Family History Institute of Southwest Virginia** will be held at the Holiday Inn in Wytheville, Virginia on May 6, 1995. If you are interested, send a stamped self-addressed envelope for registration details. Address: Mary B. Kegley, Director, Family History Institute of Southwest Virginia, P. O. Box 134, Wytheville, VA 24382.

The National Genealogical Society (NGS) will hold its **Annual Conference in the States**, in San Diego, California, May 3-6, 1995. Three of our MTGS members, Shirley Wilson, Irene M. Griffey and Gale Williams Baman are speakers, and other Society members plan to attend. To request a Conference Registration/Program booklet, write: National Genealogical Society, 4527 17th Street North, Arlington, VA 22207-2399.

On May 12-13, 1995, the East Tennessee Historical Society, in cooperation with numerous other organizations including our Middle Tennessee Genealogy Society, will sponsor a genealogical conference, **Southeastern Genealogy**, in Knoxville. Regional in scope, the conference will feature nationally-known and local speakers. The conference will begin at 3:00 p.m., Friday, May 12, and run through 4:30 p.m., Saturday, May 13, 1995. Members of MTGS will receive a \$4 discount on registration. Further information, along with lodging and conference forms may be obtained from Genealogy Conference, East Tennessee Historical Society, P. O. Box 1629, Knoxville, TN 37901. Telephone (615) 544-5732.

"From Sea to Shining Sea" Conference, sponsored by The Federation of Genealogical Societies will be held in Seattle, Washington, 20-23 September 1995. There will be over 50 speakers from around the United States who will give more than 130 lectures including a Land Platting Workshop. Write FGS/SGS Conference, P. O. Box 3385, Salt Lake City, UT 84110-3385.

### Available back issues of Middle Tennessee Genealogy

Volumes 1 & 2 . . .	\$8 per volume, \$2 per issue
Volumes 3 & 4 . . .	\$14 per volume, \$3.50 per issue
Volumes 5 & 6 . . .	\$16 per volume, \$4.00 per issue
Volume 7 forward .	\$18 per volume, \$4.50 per issue

Send check of money order with your request for specific issue(s) to:

**Middle Tennessee Genealogical Society**  
P. O. Box 190625  
Nashville, TN 37219-0625

MIDDLE TENNESSEE GENEALOGICAL SOCIETY  
P. O. Box 190625 / NASHVILLE, TN 37219-0625

*Membership Application*

Name \_\_\_\_\_ Phone \_\_\_\_\_

Address \_\_\_\_\_ County \_\_\_\_\_

City \_\_\_\_\_ State \_\_\_\_\_ Zip \_\_\_\_\_

Occupation \_\_\_\_\_

Surnames and Counties being searched (include up to 18) \_\_\_\_\_ New Membership ☐ Renewal ☐

\_\_\_\_\_

\_\_\_\_\_

\_\_\_\_\_

*Make check or money order payable to Middle Tennessee Genealogical Society. Memberships \$18 per year. If paid after June 30, the dues are \$21. Add \$5 postage for Canada.*

\*\*\*\*\*

MIDDLE TENNESSEE GENEALOGICAL SOCIETY  
P. O. Box 190625  
Nashville, TN 37219-0625

*Address Correction Requested*

Non-Profit  
Organization  
U. S. POSTAGE  
PAID  
Permit No. 3229  
Nashville, TN